

Part Number: **WAG-22-Sxx**

WR-22 Straight Waveguide

- 33GHz to 50GHz
- Copper waveguide
- Brass flanges
- Gold plated
- xx = Length
- Very low loss



Input Port WR-22 Waveguide, UG-383/U Flange
Output Port WR-22 Waveguide, UG-383/U Flange

STOCK#:

Part Number: WAG-22-Sxx

PRODUCT OVERVIEW

Precision mmw Straight Waveguides are built with high precision and then gold plated for high corrosion resistance. They have very low loss and great VSWR

APPLICATIONS

- 5G Systems
- Radar
- Communication Systems
- Satellite Communication

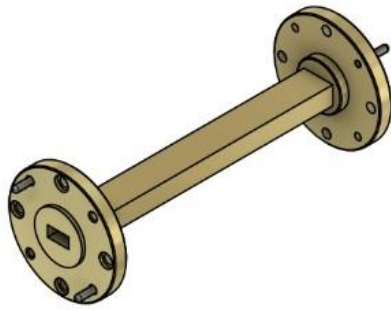
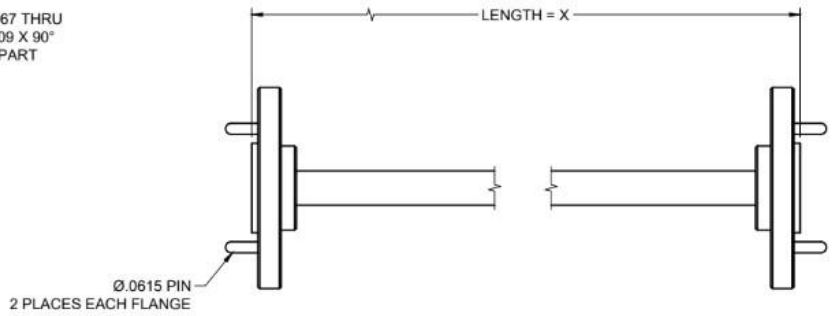
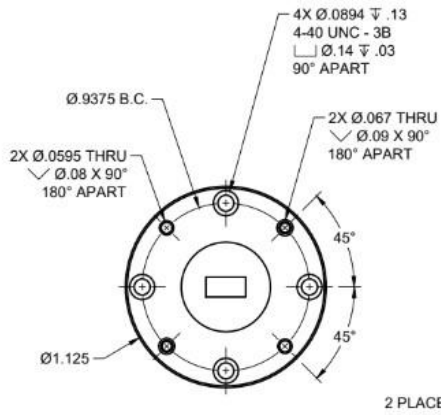


Phone: +1 (727) 371-5596

Sales@PrecisionMMW.com

www.PrecisionMMW.com

Parameter	Specification
Frequency Range	33GHz to 50GHz
Insertion Loss	0.10 per inch Typical
VSWR	1.03:1 Typical
Flange	UG-383/U



PRECISION
MILLIMETER WAVE

X = ANY LENGTH STRAIGHT
UG-383 FLANGE