

# EVB-AMM-9853P-1

## Evaluation Board, DC-20GHz GaAs Surface Mount Driver Amplifier

### DEVICE OVERVIEW

#### General Description

This is the evaluation board for the AMM-9853PSM. This version is designed to be used with external bias tees. The AMM-9853PSM is a surface-mount amplifier suitable for use as a single tone driver or general-purpose gain block. It can drive H diode mixers up to 18 GHz or L diode mixers up to 20 GHz. This amplifier also is optimized for excellent gain flatness in-band and high IP3/IP2 performance. The AMM-9853PSM is packaged in a compact 3mm QFN for surface mount integration onto printed circuit boards



[Download s-parameters here](#)

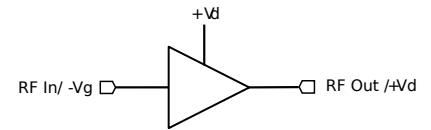
#### Features

- Designed for external bias tees
- 2.92mm RF connectors

#### Applications

N/A

#### Functional Block Diagram



#### Part Ordering Options

Part Number	Description	Package	Green Status	Product Lifecycle	Export Classification
<a href="#">AMM-9853PSM</a>	DC - 20 GHz Wideband Low Noise Amplifier	QFN	REACH RoHS	Released	EAR99
EVB-AMM-9853P-1	Evaluation Board, DC-20GHz GaAs Surface Mount Driver Amplifier	EVB	RoHS	Released	EAR99

## **EVB-AMM-9853P-1**

### **Evaluation Board, DC-20GHz GaAs Surface Mount Driver Amplifier**

#### **Table Of Contents**

■ **Device Overview**

General Description  
Features  
Applications  
Functional Block Diagram

■ **Revision History**

■ **Specifications**

■ **Mechanical Data**

Outline Drawing

■ **Evaluation Board**

Evaluation Board Outline Drawing

#### **Revision History**

<b>Revision Code</b>	<b>Revision Date</b>	<b>Comment</b>
-	2025-03-10	Initial Release

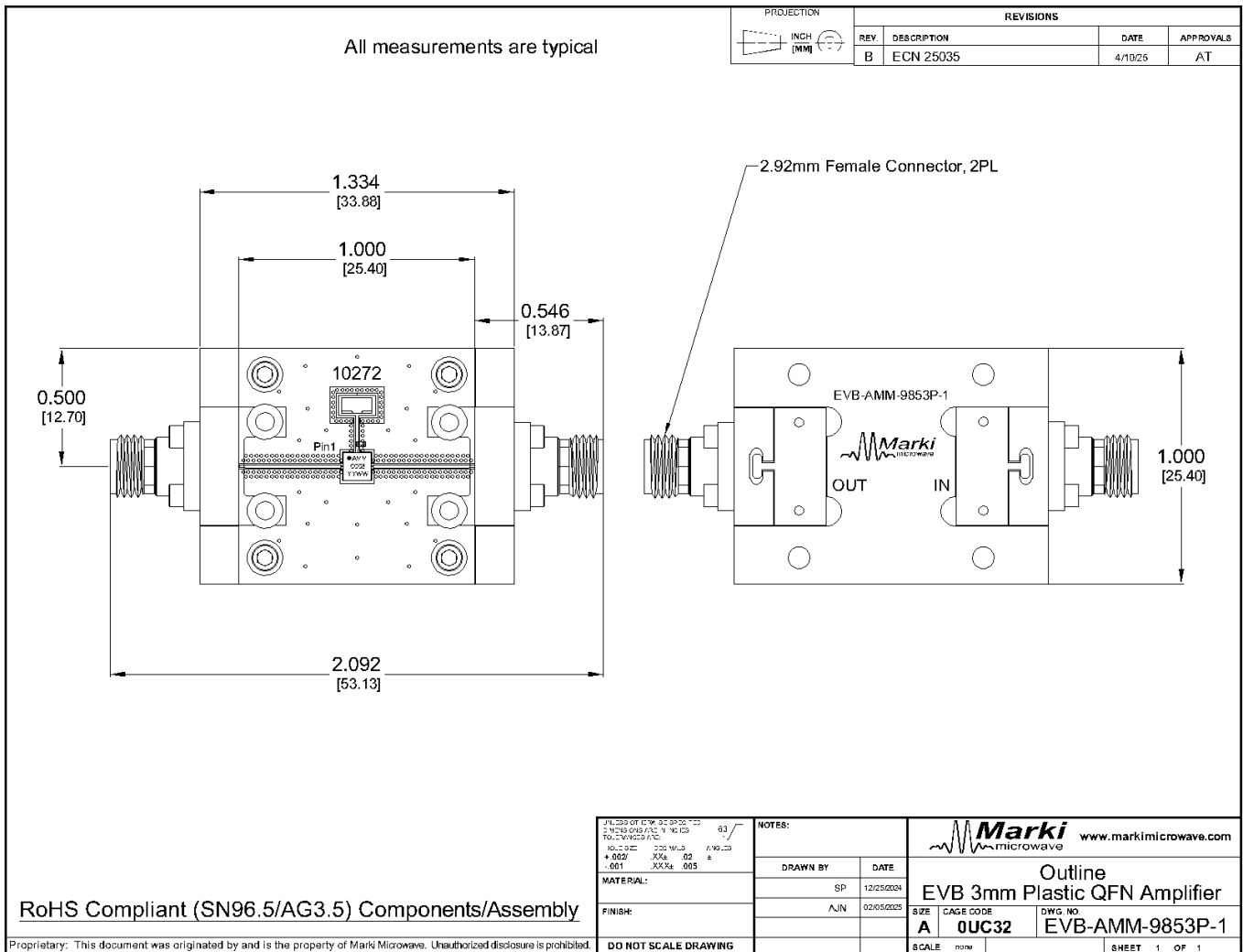
# EVb-AMM-9853P-1

## Evaluation Board, DC-20GHz GaAs Surface Mount Driver Amplifier

### Mechanical Data

### Outline Drawing

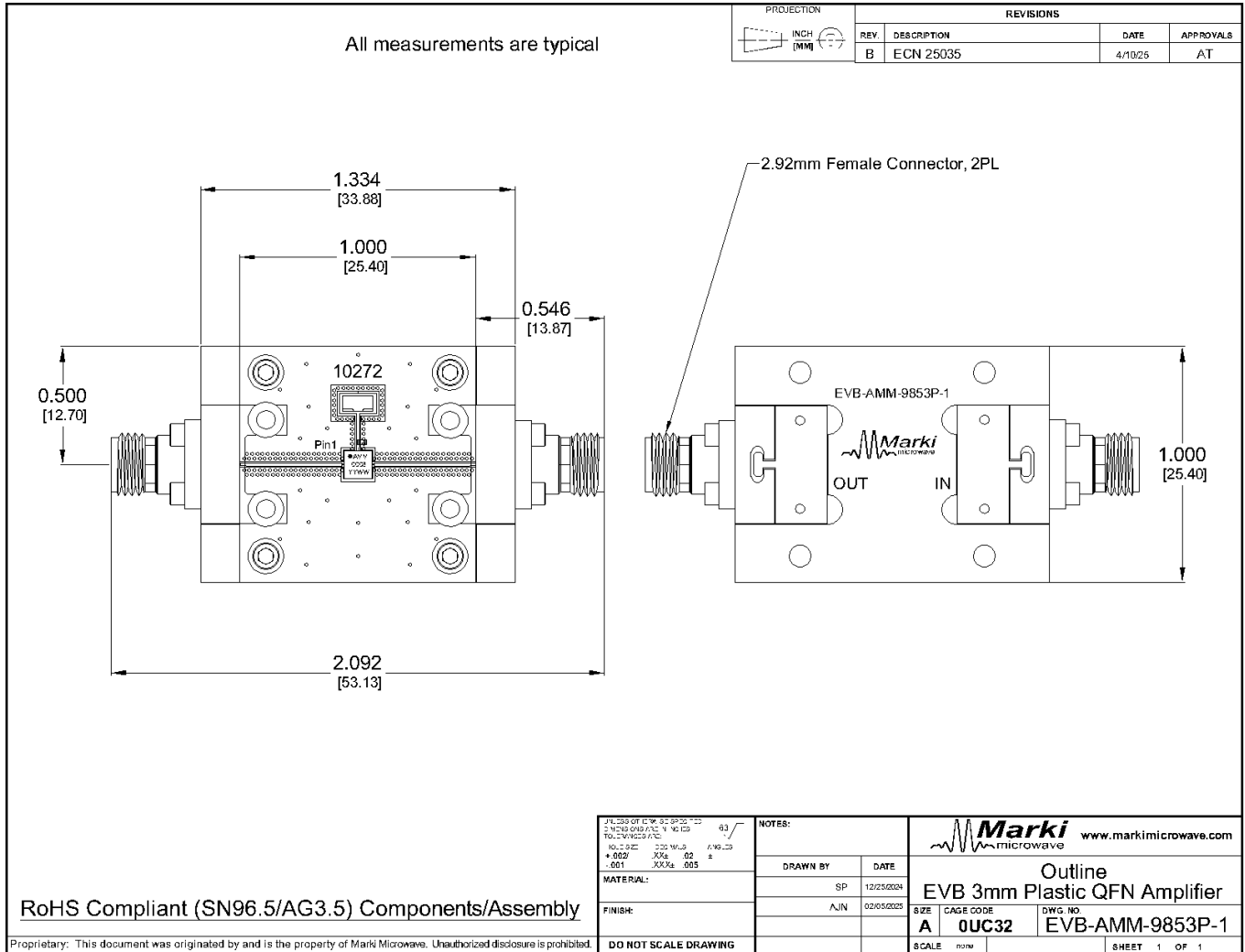
Download : [Outline 2D Drawing](#)



# EVB-AMM-9853P-1

## Evaluation Board, DC-20GHz GaAs Surface Mount Driver Amplifier

### Evaluation Board - Outline Drawing



#### **DISCLAIMER**

MARKI MICROWAVE, INC., ("MARKI") PROVIDES TECHNICAL SPECIFICATIONS AND DATA (INCLUDING DATASHEETS), APPLICATION OR OTHER DESIGN ADVICE, WEB TOOLS, AND OTHER INFORMATION AND RESOURCES "AS IS" AND WITH ALL FAULTS. MARKI DISCLAIMS ALL WARRANTIES, EXPRESS OR IMPLIED, INCLUDING, WITHOUT LIMITATION, ANY IMPLIED WARRANTIES OF MERCHANTABILITY, FITNESS FOR A PARTICULAR PURPOSE, OR NON-INFRINGEMENT.

These resources are intended for developers skilled in the art designing with Marki products. You are solely responsible for (1) selecting the appropriate products for your application, (2) designing, validating, and testing your application, and (3) ensuring your application meets applicable standards and other requirements. Marki makes no guarantee regarding the suitability of its products for any particular purpose, nor does Marki assume any liability whatsoever arising out of your use or application of any Marki product.

Marki grants you permission to use these resources only for development of an application that uses Marki products. Other reproduction or use of these resources is strictly prohibited. No license is granted to any other Marki intellectual property or to any third-party intellectual property. Marki reserves the right to make changes to the product(s) or information contained herein without notice.

MARKI MICROWAVE and T3 MIXER are trademarks or registered trademarks of Marki Microwave, Inc. All other trademarks used are the property of their respective owners.

© 2025, Marki Microwave, Inc