

DCZF24F24

DC-Block

DEVICE OVERVIEW

General Description

These DC blocks feature resonance-free operation and provide superior return loss and insertion loss across very broad bandwidths.



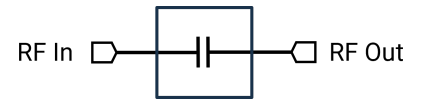
Features

- 4kHz to 50GHz Operation
- 2.4mm Connectors
- Non-Resonant
- Low Insertion Loss
- Convenient easy-grip jacket for effortless loosening

Applications

N/A

Functional Block Diagram



Part Ordering Options

Part Number	Description	Connectors	Green Status	Product Lifecycle	Export Classification
DCZM24F24	DC-Block	-	Consult Factory	Released	EAR99
DCZM24M24	DC-Block	Standard	Consult Factory	Released	EAR99
DCZF24F24	DC-Block	Standard	Consult Factory	Released	EAR99

Table Of Contents

- **Device Overview**
 - General Description
 - Features
 - Applications
 - Functional Block Diagram
- **Port Configuration and Functions**
 - Port Functions
- **Revision History**
- **Specifications**
 - Absolute Maximum Ratings
 - Electrical Specifications
 - Typical Performance Plots
- **Mechanical Data**
 - Outline Drawing

Revision History

Revision Code	Revision Date	Comment
-	2017-06-13	Initial Release

Port Configuration and Functions

Port Functions

Port	Function	Connector Type	Description	Equivalent Circuit for Package
In/Out 1	Input/Output	2.4F	RF Input/Output port 1 of the device. Device is passive and reciprocal from port 1 to port 2. Ground is not isolated between ports 1 and 2.	-
In/Out 2	Input/Output	2.4F	RF Input/Output port 2 of the device. Device is passive and reciprocal from port 1 to port 2. Ground is not isolated between ports 1 and 2.	-

Specifications

Absolute Maximum Ratings

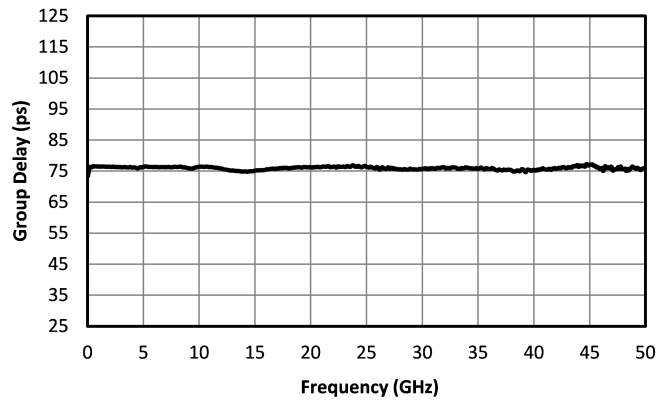
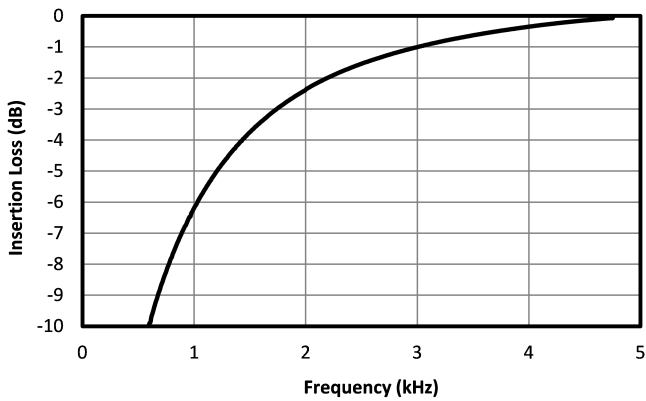
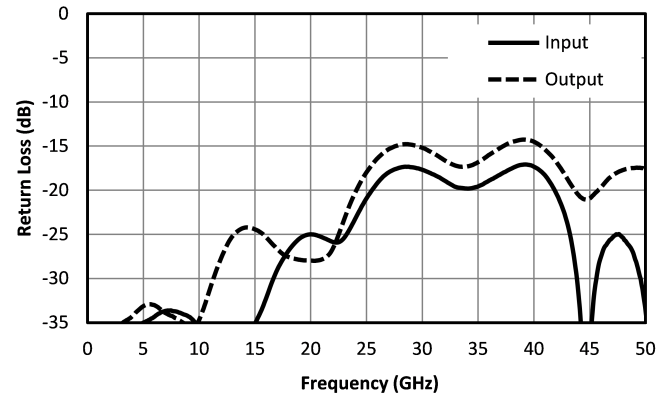
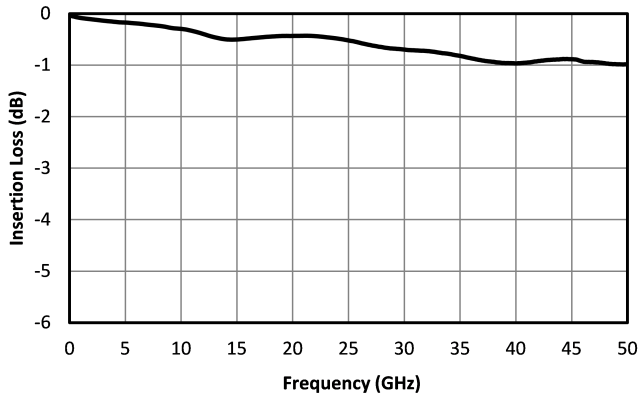
Parameter	Maximum Rating	Unit
DC Voltage	16	V
RF Power Handling, Average	1	W

Electrical Specifications

Parameter	Test Conditions	Minimum Frequency (GHz)	Maximum Frequency (GHz)	Min	Typ	Max	Unit
Capacitance	-	0.000004	50	-	1	-	μF
Group Delay	-	0.000004	50	-	75	-	ps
Insertion Loss	-	0.000004	50	-	0.7	1.25	dB
Near DC Insertion Loss	-	0.000002	0.000002	-	3	-	dB
Rise Time ¹	-	0.000004	50	-	6	-	ps
VSWR	-	0.000004	50	-	1.4	-	-

^[1] Specified as 90%/10%. Calculated from $\tau_{balun}^2 = (\tau_{out}^2 - \tau_{in}^2)$ with a 10 Gb/s input pattern.

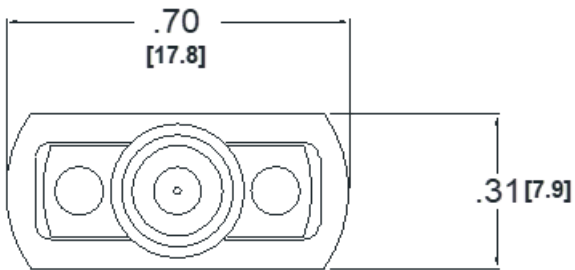
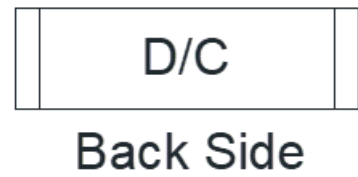
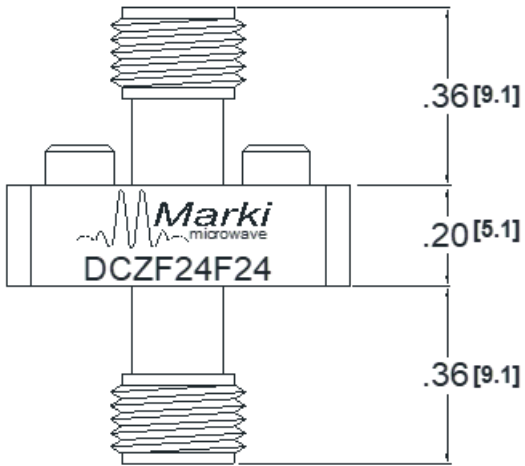
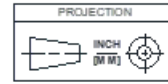
Typical Performance Plots



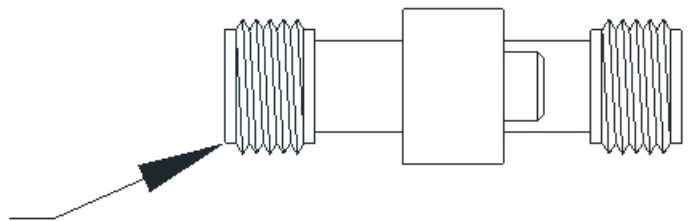
Mechanical Data

Outline Drawing

Download : [Outline 2D Drawing](#)



**2.4 mm Female Connector
2PL**



DISCLAIMER

MARKI MICROWAVE, INC., ("MARKI") PROVIDES TECHNICAL SPECIFICATIONS AND DATA (INCLUDING DATASHEETS), APPLICATION OR OTHER DESIGN ADVICE, WEB TOOLS, AND OTHER INFORMATION AND RESOURCES "AS IS" AND WITH ALL FAULTS. MARKI DISCLAIMS ALL WARRANTIES, EXPRESS OR IMPLIED, INCLUDING, WITHOUT LIMITATION, ANY IMPLIED WARRANTIES OF MERCHANTABILITY, FITNESS FOR A PARTICULAR PURPOSE, OR NON-INFRINGEMENT. These resources are intended for developers skilled in the art designing with Marki products. You are solely responsible for (1) selecting the appropriate products for your application, (2) designing, validating, and testing your application, and (3) ensuring your application meets applicable standards and other requirements. Marki makes no guarantee regarding the suitability of its products for any particular purpose, nor does Marki assume any liability whatsoever arising out of your use or application of any Marki product.

Marki grants you permission to use these resources only for development of an application that uses Marki products. Other reproduction or use of these resources is strictly prohibited. No license is granted to any other Marki intellectual property or to any third-party intellectual property. Marki reserves the right to make changes to the product(s) or information contained herein without notice.

MARKI MICROWAVE and T3 MIXER are trademarks or registered trademarks of Marki Microwave, Inc. All other trademarks used are the property of their respective owners.

© 2017, Marki Microwave, Inc