

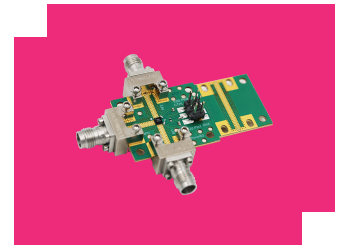
EVB-MSW2-1001E

0.1 - 40 GHz Surface Mount SPDT Switch

DEVICE OVERVIEW

General Description

The EVB-MSW2-1001E is a connectorized evaluation board for the MSW2-1001ELGA surface mount 0.1-40 GHz single-pole double throw (SPDT) switch.



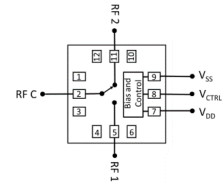
Features

N/A

Applications

N/A

Functional Block Diagram



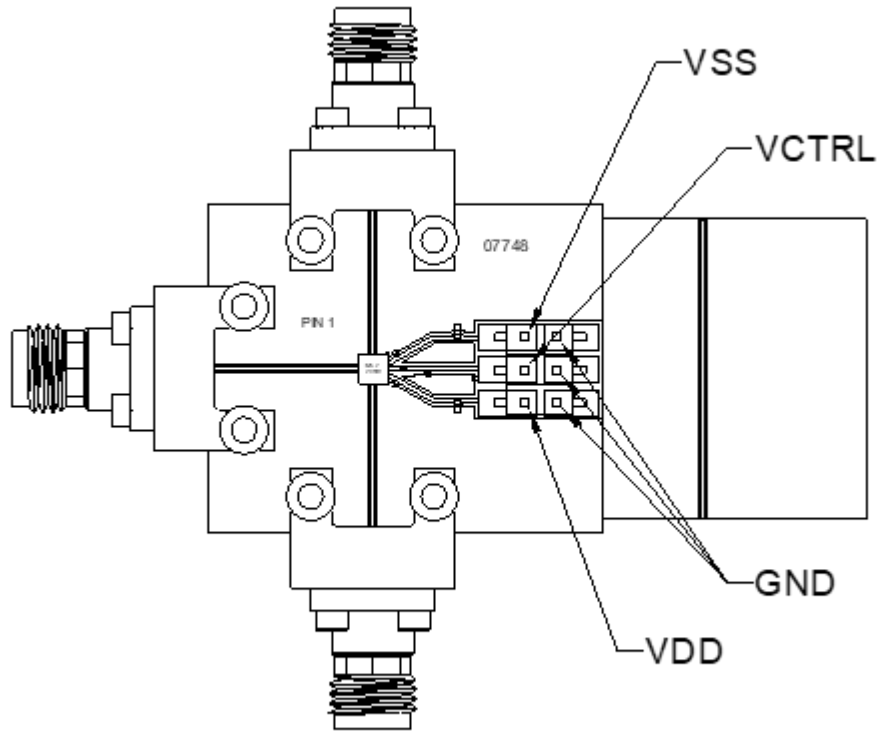
Part Ordering Options

Part Number	Description	Package	Green Status	Product Lifecycle	Export Classification
MSW2-1001ELGA	0.1-40 GHz Surface Mount SPDT Switch	LGA	REACH RoHS	Released	EAR99
EVB-MSW2-1001E	0.1 - 40 GHz Surface Mount SPDT Switch	EVB	REACH RoHS	Released	EAR99

Table Of Contents

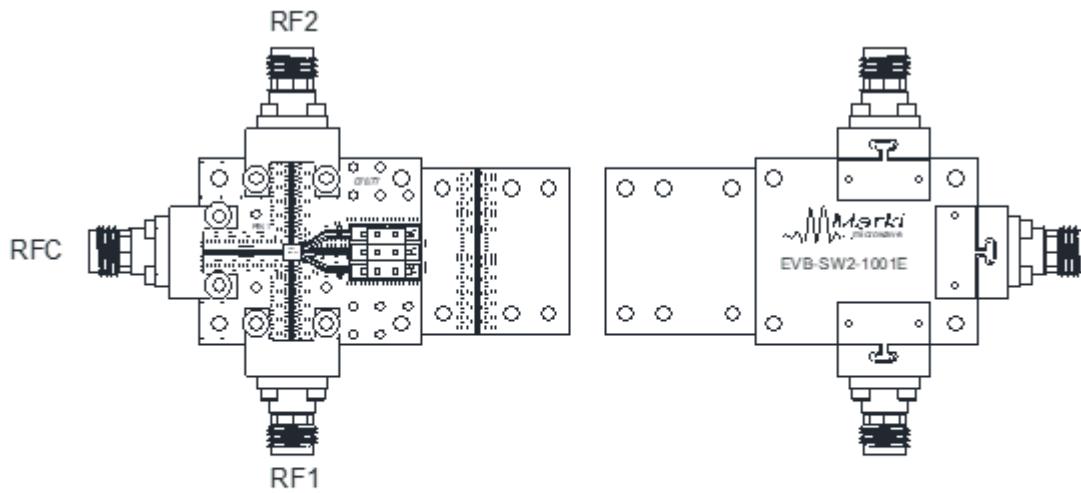
- **Device Overview**
 - General Description
 - Features
 - Applications
 - Functional Block Diagram
- **Specifications**
- **Operation**
 - Application Information
- **Mechanical Data**
 - Outline Drawing
- **Evaluation Board**
 - Evaluation Board Bill of Materials
 - Evaluation Board Bill of Materials Table
 - Evaluation Board Outline Drawing

Application Information



Mechanical Data

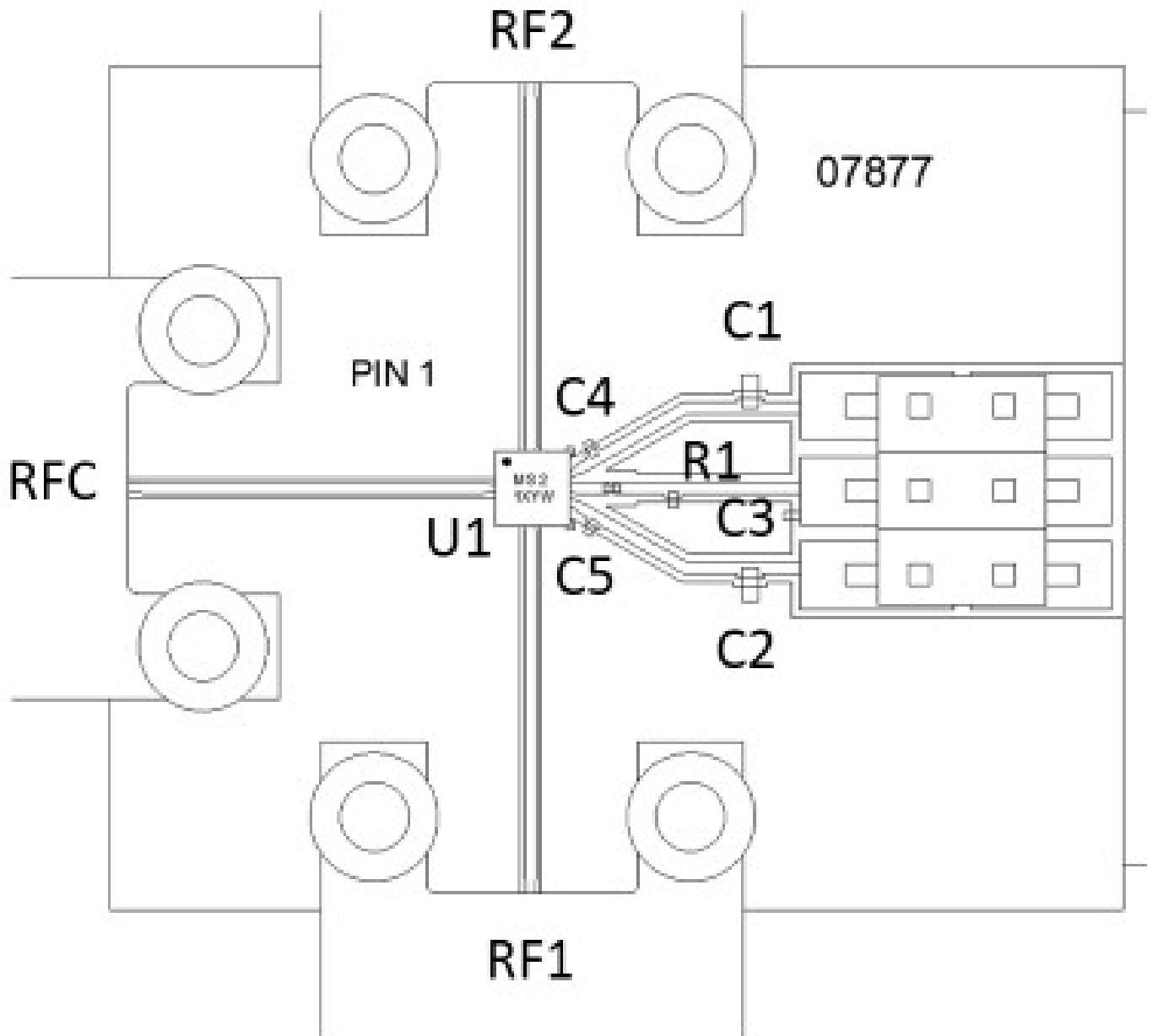
Outline Drawing



Port	Connector Type
RF 1	2.4 mm Female
RF2	2.4 mm Female
RFC	2.4 mm Female

Evaluation Board

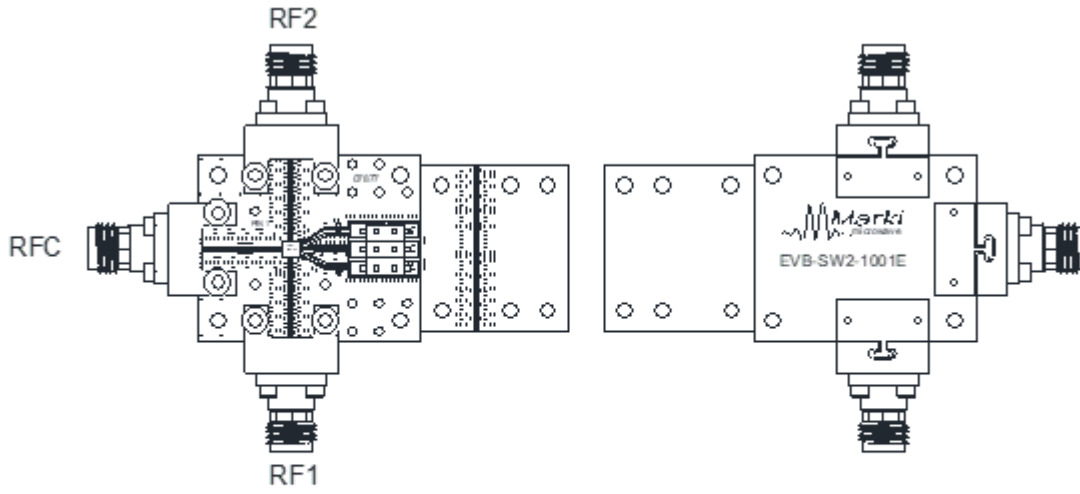
Evaluation Board Bill of Materials



Evaluation Board Bill of Materials Table

Reference	Part Number	Manufacturer	Description	Qty
RFC, RF1, RF2	1492-D4A-5	Southwest	Connector, Edge Mount, 2.4mm F	3
C1, C2	C1206X5R6R3-106MNE	Venkel	0402 Capacitor 10uF 6.3V	2
R1	RM7381E103J	KOA	0402 Resistor 10k OHM 1/16W	1
C3, C4, C5	C0201C0G250-101JNP	Venkel	0201 Capacitor 100pF 25V	3
U1	MSW2-1001E LGA	Marki	28 dBm, SPDT, Flipchip Package	1
	12814	SPM	Ribbon, 15mil Pb/Sn	1

Evaluation Board - Outline Drawing



Port	Connector Type
RF 1	2.4 mm Female
RF2	2.4 mm Female
RF3	2.4 mm Female

DISCLAIMER

MARKI MICROWAVE, INC., ("MARKI") PROVIDES TECHNICAL SPECIFICATIONS AND DATA (INCLUDING DATASHEETS), APPLICATION OR OTHER DESIGN ADVICE, WEB TOOLS, AND OTHER INFORMATION AND RESOURCES "AS IS" AND WITH ALL FAULTS. MARKI DISCLAIMS ALL WARRANTIES, EXPRESS OR IMPLIED, INCLUDING, WITHOUT LIMITATION, ANY IMPLIED WARRANTIES OF MERCHANTABILITY, FITNESS FOR A PARTICULAR PURPOSE, OR NON-INFRINGEMENT. These resources are intended for developers skilled in the art designing with Marki products. You are solely responsible for (1) selecting the appropriate products for your application, (2) designing, validating, and testing your application, and (3) ensuring your application meets applicable standards and other requirements. Marki makes no guarantee regarding the suitability of its products for any particular purpose, nor does Marki assume any liability whatsoever arising out of your use or application of any Marki product.

Marki grants you permission to use these resources only for development of an application that uses Marki products. Other reproduction or use of these resources is strictly prohibited. No license is granted to any other Marki intellectual property or to any third-party intellectual property. Marki reserves the right to make changes to the product(s) or information contained herein without notice.

MARKI MICROWAVE and T3 MIXER are trademarks or registered trademarks of Marki Microwave, Inc. All other trademarks used are the property of their respective owners.

© 2022 - 2025, Marki Microwave, Inc