

DET-28PP00WG

Detector WR-28 (Ka-Band)

DEVICE OVERVIEW

General Description

Detector WR-28 Marki Microwave Ka-band Detectors, operating from 26.5-40 GHz, are built with high quality materials and by experienced high precision assemblers. These detectors utilize a very sensitive Low-Barrier Schottky Diode.



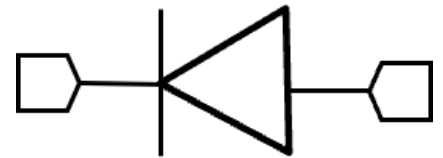
Features

- Greater than 1800mV/mW sensitivity
- Less than 3dB variation over band
- Compact and lightweight

Applications

- Radar
- Frequency Counters
- Communication Systems
- Power Monitoring

Functional Block Diagram



Part Ordering Options

Part Number	Description	Package	Green Status	Product Lifecycle	Export Classification
DET-28PP00WG	Detector WR-28 (Ka-Band)	WR-28	REACH RoHS	Released	EAR99

Table Of Contents

- **Device Overview**
 - General Description
 - Features
 - Applications
 - Functional Block Diagram
- **Revision History**
- **Specifications**
 - Absolute Maximum Ratings
 - Electrical Specifications
 - Typical Performance
- **Mechanical Data**
 - Outline Drawing

Revision History

Revision Code	Revision Date	Comment
-	2024-05-01	Initial Release

Specifications

Absolute Maximum Ratings

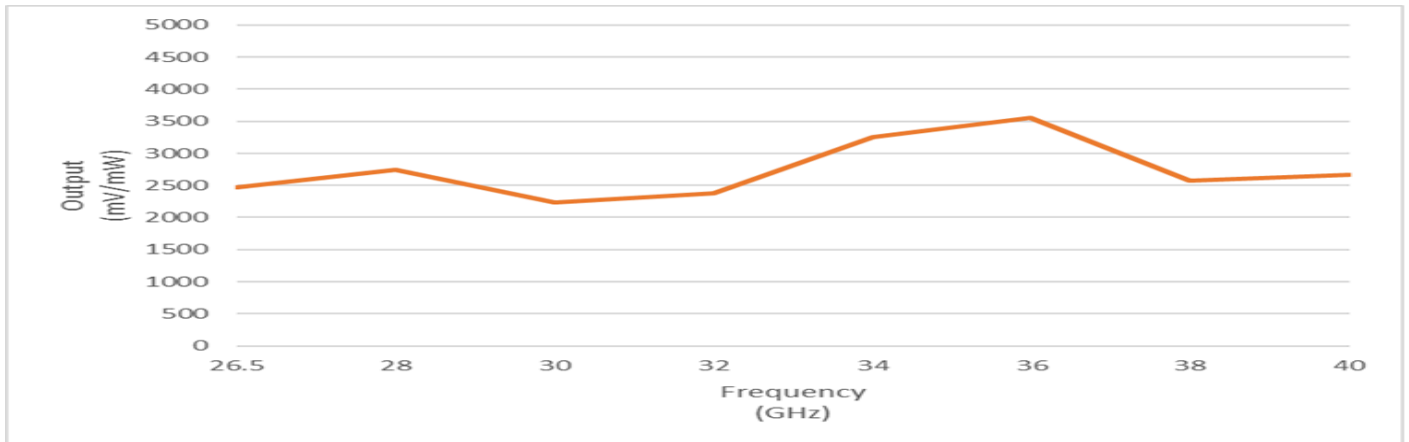
Permanent damage may occur if any of these limits are exceeded.

Parameter	Maximum Rating	Unit
Maximum Operating Temperature	70	°C
Maximum Storage Temperature	100	°C
Minimum Operating Temperature	-20	°C
Minimum Storage Temperature	-55	°C
RF Input Power	17	dBm

Electrical Specifications

Parameter	Test Conditions	Minimum Frequency (GHz)	Maximum Frequency (GHz)	Min	Typ	Max	Unit
Amplitude Flatness	-	26.5	40	-	-	1.5	dB
Input Power for Linear Operation	-	26.5	40	-35	-	10	dBm
Operating Input Power Range	-	26.5	40	-40	-	15	dBm
Sensitivity	-	26.5	40	1800	-	-	mV/mW

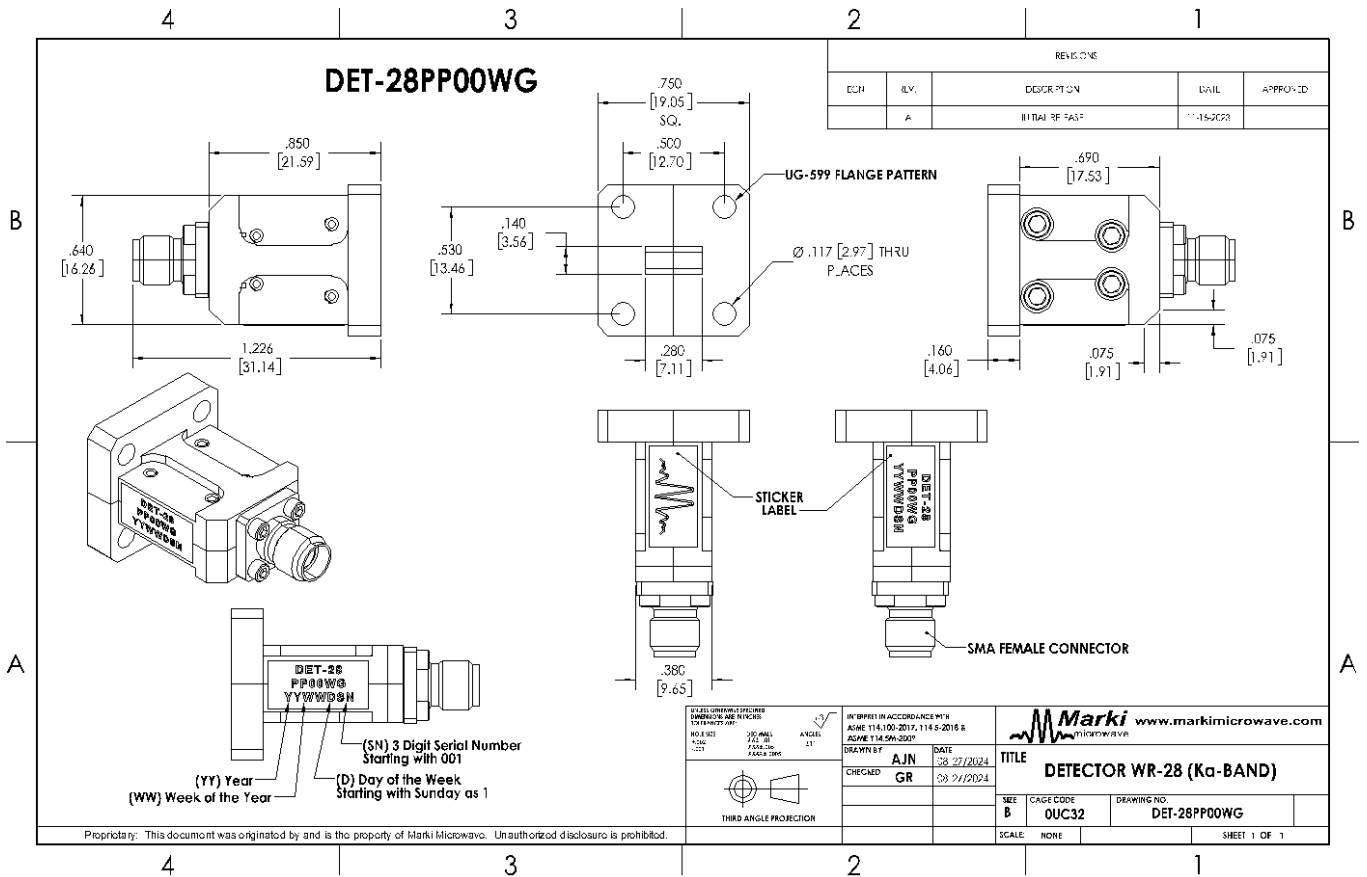
Typical Performance



Mechanical Data

Outline Drawing

Download : [Outline 2D Drawing](#) | [Outline 3D STP](#)



DISCLAIMER

MARKI MICROWAVE, INC., ("MARKI") PROVIDES TECHNICAL SPECIFICATIONS AND DATA (INCLUDING DATASHEETS), APPLICATION OR OTHER DESIGN ADVICE, WEB TOOLS, AND OTHER INFORMATION AND RESOURCES "AS IS" AND WITH ALL FAULTS. MARKI DISCLAIMS ALL WARRANTIES, EXPRESS OR IMPLIED, INCLUDING, WITHOUT LIMITATION, ANY IMPLIED WARRANTIES OF MERCHANTABILITY, FITNESS FOR A PARTICULAR PURPOSE, OR NON-INFRINGEMENT. These resources are intended for developers skilled in the art designing with Marki products. You are solely responsible for (1) selecting the appropriate products for your application, (2) designing, validating, and testing your application, and (3) ensuring your application meets applicable standards and other requirements. Marki makes no guarantee regarding the suitability of its products for any particular purpose, nor does Marki assume any liability whatsoever arising out of your use or application of any Marki product.

Marki grants you permission to use these resources only for development of an application that uses Marki products. Other reproduction or use of these resources is strictly prohibited. No license is granted to any other Marki intellectual property or to any third-party intellectual property. Marki reserves the right to make changes to the product(s) or information contained herein without notice.

MARKI MICROWAVE and T3 MIXER are trademarks or registered trademarks of Marki Microwave, Inc. All other trademarks used are the property of their respective owners.

© 2024, Marki Microwave, Inc