

EVB-ADM-9028P

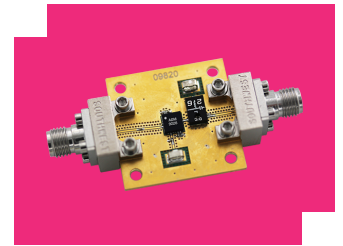
Evaluation Board, 300kHz - 26GHz Distributed Amplifier

DEVICE OVERVIEW

General Description

The EVB-ADM-9028P is a connectorized evaluation board for the ADM-9028PSM 300kHz - 26GHz distributed amplifier.

[Download s-parameters here](#)



Features

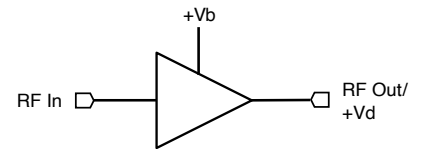
2.92mm female edge launch connectors

Integrated output bias tee and input DC blocking capacitor

Applications

N/A

Functional Block Diagram



Part Ordering Options

Part Number	Description	Package	Green Status	Product Lifecycle	Export Classification
ADM-9028PSM	300kHz - 26 GHz Distributed Amplifier	QFN	RoHS REACH	Released	EAR99
EVB-ADM-9028P	Evaluation Board, 300kHz - 26GHz Distributed Amplifier	EVB	REACH RoHS	Released	EAR99



www.markimicrowave.com

EVB-ADM-9028P

Evaluation Board, 300kHz - 26GHz Distributed Amplifier

Table Of Contents

- **Device Overview**
 - General Description
 - Features
 - Applications
 - Functional Block Diagram
- **Revision History**
- **Specifications**
- **Mechanical Data**
 - Outline Drawing
- **Evaluation Board**
 - Evaluation Board Outline Drawing

Revision History

Revision Code	Revision Date	Comment
-	2024-07-09	Initial Release

EVb-ADM-9028P

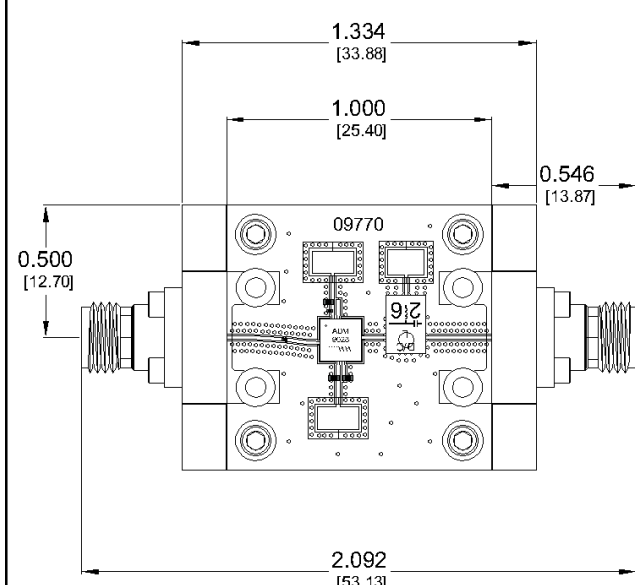
Evaluation Board, 300kHz - 26GHz Distributed Amplifier

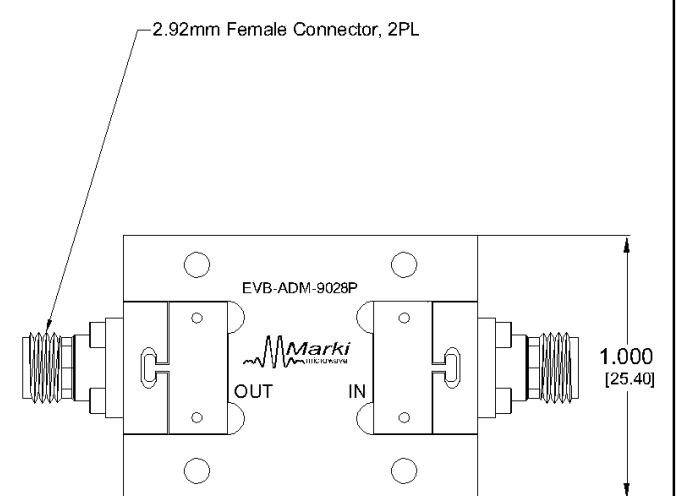
Mechanical Data

Outline Drawing

Download : [Outline 2D Drawing](#)

All measurements are typical





PROJECTION		REVISIONS			
INCH	[MM]	REV.	DESCRIPTION	DATE	APPROVALS
		B	ECN 25035	4/9/25	AT

RoHS Compliant (SN96.5/AG3.5) Components/Assembly

Proprietary: This document was originated by and is the property of Marki Microwave. Unauthorized disclosure is prohibited.

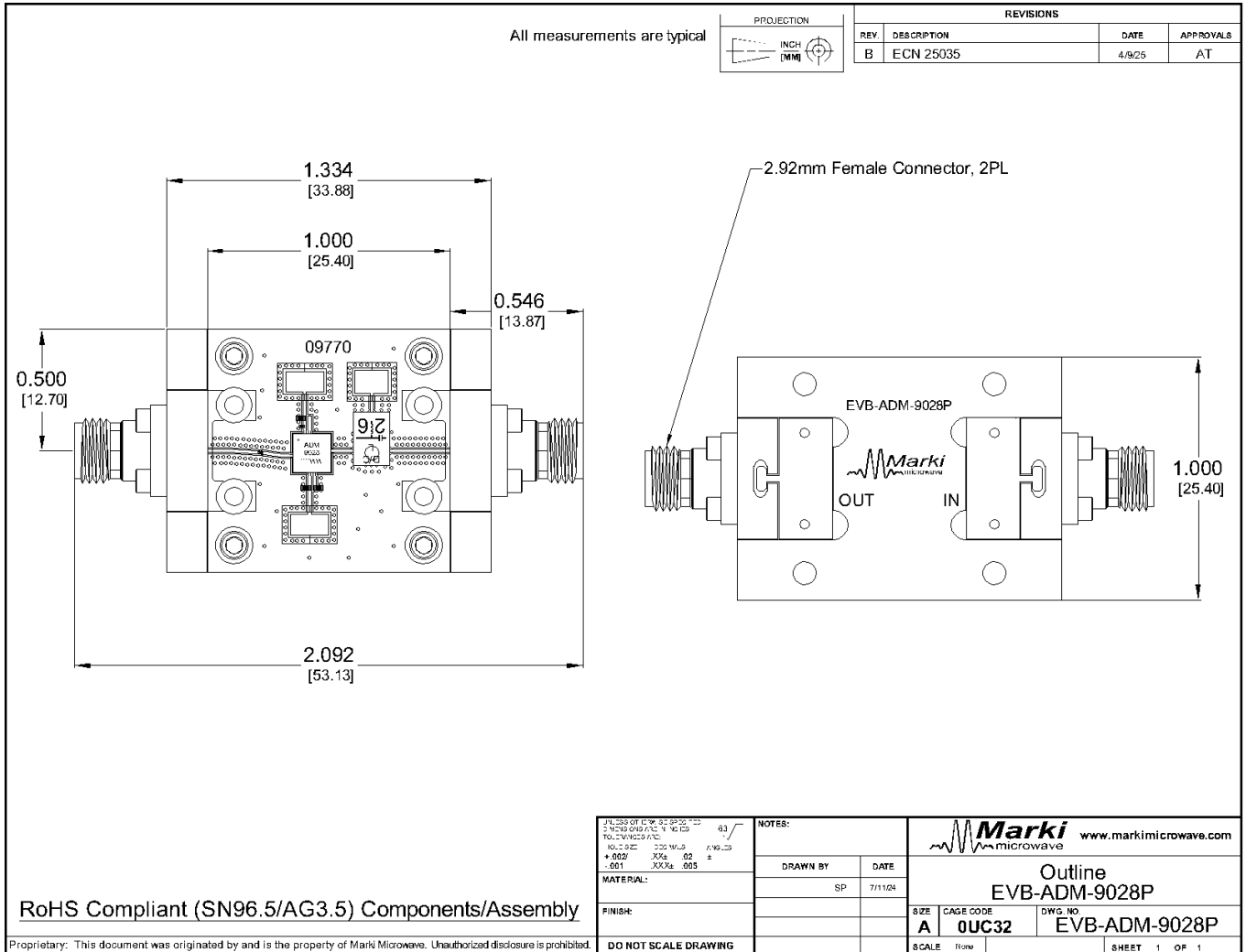
J1.250 OF EVB-ADM-9028P © 2025 MARKI MICROWAVE TO: 25035 / 1/25 10.000 250 MARKI 1/16.25 +.005 .005 00 4 -.001 .001 005 4	NOTES: DRAWN BY: SP DATE: 7/11/24	Marki microwave www.markimicrowave.com
MATERIAL: FINISH:	SIZE: A CAGE CODE: 0UC32 DWG. NO.: EVB-ADM-9028P	Outline EVB-ADM-9028P SHEET 1 OF 1

DO NOT SCALE DRAWING

EVB-ADM-9028P

Evaluation Board, 300kHz - 26GHz Distributed Amplifier

Evaluation Board - Outline Drawing



DISCLAIMER

MARKI MICROWAVE, INC., ("MARKI") PROVIDES TECHNICAL SPECIFICATIONS AND DATA (INCLUDING DATASHEETS), APPLICATION OR OTHER DESIGN ADVICE, WEB TOOLS, AND OTHER INFORMATION AND RESOURCES "AS IS" AND WITH ALL FAULTS. MARKI DISCLAIMS ALL WARRANTIES, EXPRESS OR IMPLIED, INCLUDING, WITHOUT LIMITATION, ANY IMPLIED WARRANTIES OF MERCHANTABILITY, FITNESS FOR A PARTICULAR PURPOSE, OR NON-INFRINGEMENT. These resources are intended for developers skilled in the art designing with Marki products. You are solely responsible for (1) selecting the appropriate products for your application, (2) designing, validating, and testing your application, and (3) ensuring your application meets applicable standards and other requirements. Marki makes no guarantee regarding the suitability of its products for any particular purpose, nor does Marki assume any liability whatsoever arising out of your use or application of any Marki product.

Marki grants you permission to use these resources only for development of an application that uses Marki products. Other reproduction or use of these resources is strictly prohibited. No license is granted to any other Marki intellectual property or to any third-party intellectual property. Marki reserves the right to make changes to the product(s) or information contained herein without notice.

MARKI MICROWAVE and T3 MIXER are trademarks or registered trademarks of Marki Microwave, Inc. All other trademarks used are the property of their respective owners.

© 2024, Marki Microwave, Inc