

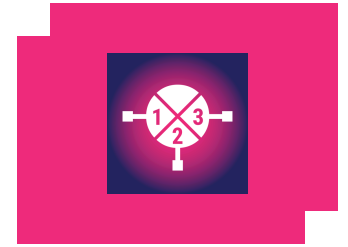
EVB-MM1A-0626S

Evaluation Board, Integrated Drive GaAs MMIC Mixer

DEVICE OVERVIEW

General Description

This is the evaluation board for the MM1A-0626SPSM integrated drive GaAs MMIC mixer. The MM1A-0626SPSM is a versatile, robust, and broadband double balanced mixer with an integrated broadband LO driver amplifier. The MM1A-0626SPSM is ideal for applications with wide bandwidths and operation through the K band. The integrated LO driver amplifier allows for operation with LO powers as low as -4 dBm while retaining exceptional conversion loss and linearity.



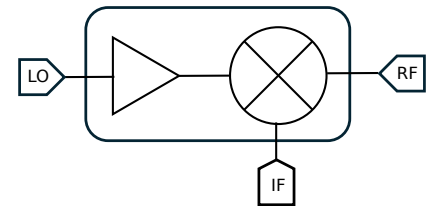
Features

N/A

Applications

N/A

Functional Block Diagram



Part Ordering Options

Part Number	Description	Package	Green Status	Product Lifecycle	Export Classification
MM1A-0626SPSM	Double Balanced Mixer/LO Amplifier	QFN	REACH RoHS	Released	EAR99
EVB-MM1A-0626S	Evaluation Board, Integrated Drive GaAs MMIC Mixer	EVB	RoHS REACH	Released	EAR99



www.markimicrowave.com

EVB-MM1A-0626S

Evaluation Board, Integrated Drive GaAs MMIC Mixer

Table Of Contents

- **Device Overview**

- General Description
- Features
- Applications
- Functional Block Diagram

- **Revision History**

- **Specifications**

- **Mechanical Data**

- Outline Drawing

- **Footprint Image**

- **Evaluation Board**

- Evaluation Board Outline Drawing

Revision History

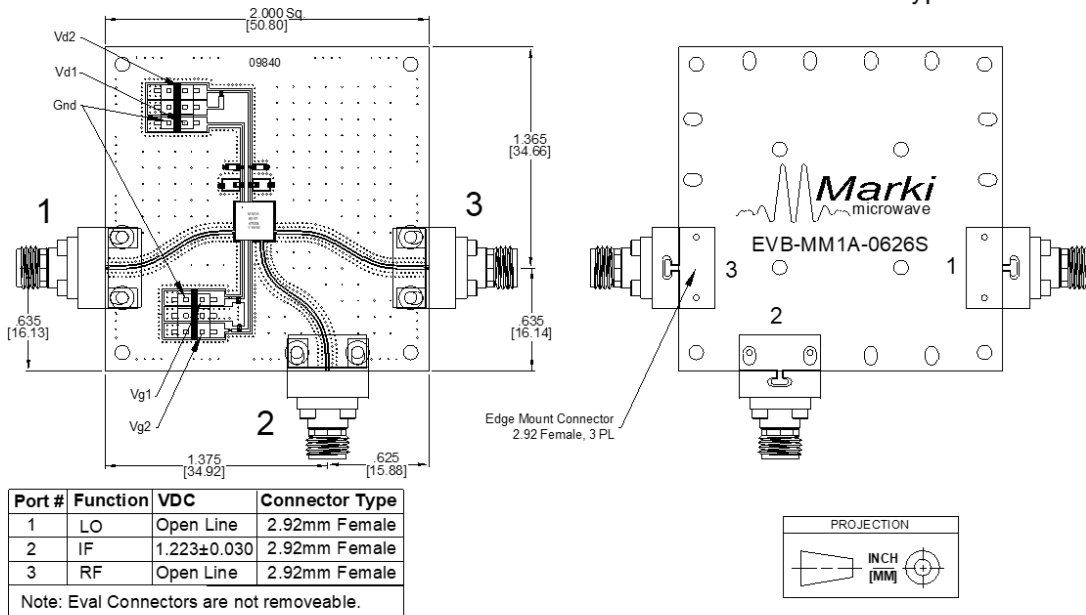
Revision Code	Revision Date	Comment
-	2024-12-10	Initial Release

Mechanical Data

Outline Drawing

Download : [Outline 2D Drawing](#)

All Dimensions are typical.



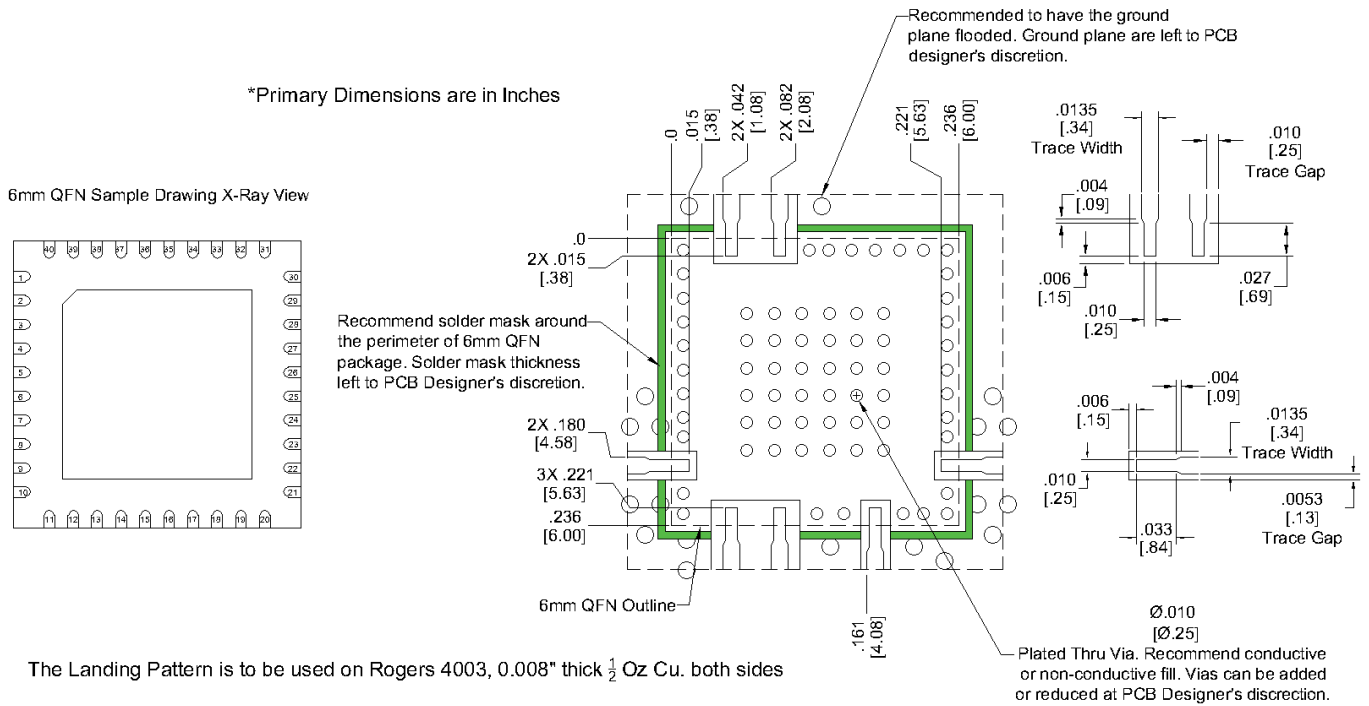
RoHS Compliant (SN96.5/AG3.5) Components/Assembly

EVB-MM1A-0626S

Evaluation Board, Integrated Drive GaAs MMIC Mixer

Footprint Image

Download : [Footprint Drawing](#)

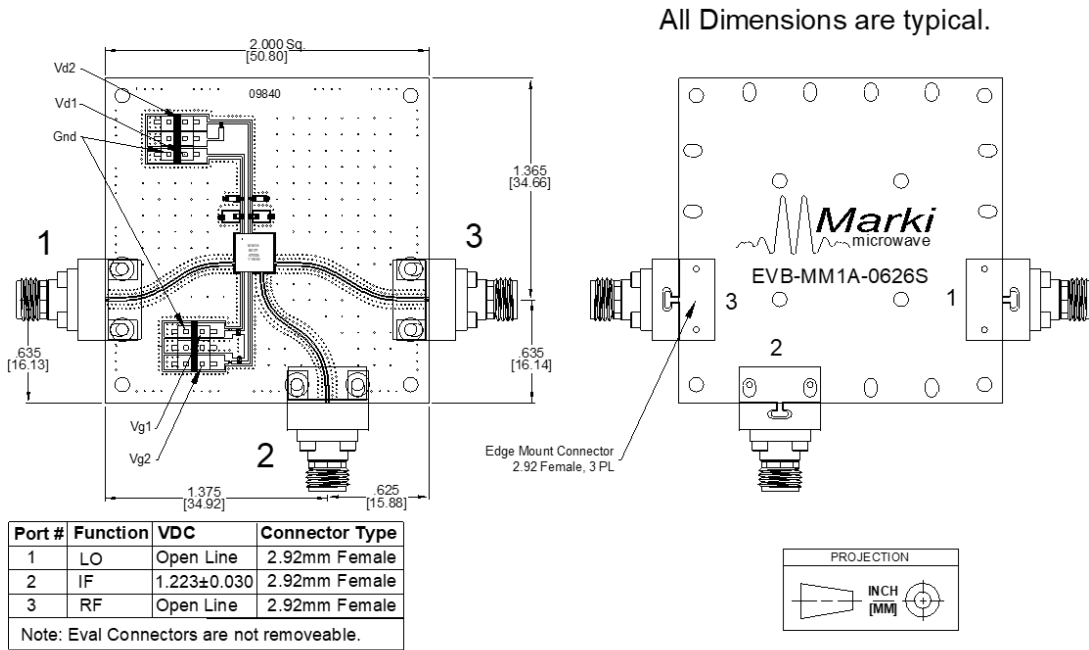


The Landing Pattern is to be used on Rogers 4003, 0.008" thick $\frac{1}{2}$ Oz Cu. both sides

EVB-MM1A-0626S

Evaluation Board, Integrated Drive GaAs MMIC Mixer

Evaluation Board - Outline Drawing



RoHS Compliant (SN96.5/AG3.5) Components/Assembly

DISCLAIMER

MARKI MICROWAVE, INC., ("MARKI") PROVIDES TECHNICAL SPECIFICATIONS AND DATA (INCLUDING DATASHEETS), APPLICATION OR OTHER DESIGN ADVICE, WEB TOOLS, AND OTHER INFORMATION AND RESOURCES "AS IS" AND WITH ALL FAULTS. MARKI DISCLAIMS ALL WARRANTIES, EXPRESS OR IMPLIED, INCLUDING, WITHOUT LIMITATION, ANY IMPLIED WARRANTIES OF MERCHANTABILITY, FITNESS FOR A PARTICULAR PURPOSE, OR NON-INFRINGEMENT.

These resources are intended for developers skilled in the art designing with Marki products. You are solely responsible for (1) selecting the appropriate products for your application, (2) designing, validating, and testing your application, and (3) ensuring your application meets applicable standards and other requirements. Marki makes no guarantee regarding the suitability of its products for any particular purpose, nor does Marki assume any liability whatsoever arising out of your use or application of any Marki product.

Marki grants you permission to use these resources only for development of an application that uses Marki products. Other reproduction or use of these resources is strictly prohibited. No license is granted to any other Marki intellectual property or to any third-party intellectual property. Marki reserves the right to make changes to the product(s) or information contained herein without notice.

MARKI MICROWAVE and T3 MIXER are trademarks or registered trademarks of Marki Microwave, Inc. All other trademarks used are the property of their respective owners.

© 2024, Marki Microwave, Inc