

# MPD-1260FCSP2

## 12 - 60 GHz MMIC 2-Way Wilkinson Power Divider/Power Splitter, Front Ports

### DEVICE OVERVIEW

#### General Description

The MPD-1260FCSP2 is a small footprint MMIC 12-60 GHz 2-Way power divider/power splitter featuring high 22 dB isolation and low 0.3 dB insertion loss in our compact CSP2 chip scale package. It is much smaller than a printed PCB Wilkinson Power Divider/Combiner. It can be used as an equal amplitude/phase power splitter or a power combiner with excellent isolation. Tight fabrication tolerances result in less unit-to-unit variation than traditional power divider technologies, allowing for accurate simulations using the provided S3P file taken from measured production units. The MPD-1260FCSP2 features front port outputs opposite to the common port. For side port outputs, refer to the MPD-1260SCSP2. The 2.5 mm CSP2 package enables extreme miniaturization of SMT footprint making the MPD-1260FCSP2 ideal for applications prioritizing low SWaP.



[Download s-parameters here](#)

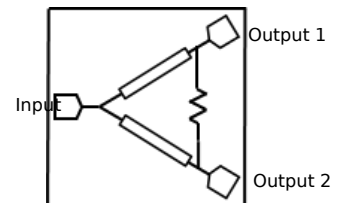
#### Features

- 2-way splitter or combiner in a compact 2.5mm package
- Front ports
- Low 0.3 dB typical insertion loss
- High 22 dB isolation
- Excellent 0.2 dB amplitude and 1° phase balance
- This product embodies Marki Microwave's U.S. Pat. 11,869,858

#### Applications

- Test Equipment
- Electronic Warfare
- Radar and satellite communications
- High Channel Count Systems

#### Functional Block Diagram



#### Part Ordering Options

Part Number	Description	Package	Green Status	Product Lifecycle	Export Classification
MPD-1260FCSP2	12 - 60 GHz MMIC 2-Way Wilkinson Power Divider/Power Splitter, Front Ports	CSP2	REACH RoHS	Released	EAR99
EVB-MPD-1260F	Evaluation Board, 12 - 60 GHz MMIC 2-Way Wilkinson Power Divider/Power Splitter, Front Ports	EVB	RoHS REACH	Released	EAR99

## MPD-1260FCSP2

### 12 - 60 GHz MMIC 2-Way Wilkinson Power Divider/Power Splitter, Front Ports

#### Table Of Contents

- **Device Overview**
  - General Description
  - Features
  - Applications
  - Functional Block Diagram
- **Port Configuration and Functions**
  - Port Diagram
  - Port Functions
- **Revision History**
- **Specifications**
  - Absolute Maximum Ratings
  - Package Information
  - Electrical Specifications
  - Typical Performance Plots
- **Mechanical Data**
  - Outline Drawing
- **Footprint Image**
- **Evaluation Board**
  - Evaluation Board Outline Drawing

#### Revision History

Revision Code	Revision Date	Comment
-	2024-11-21	Initial Release
A	2025-04-28	Updated Moisture Sensitivity from MSL3 to MSL1
B	2025-09-12	Power Handling Added
C	2025-12-17	Power Handling Updated

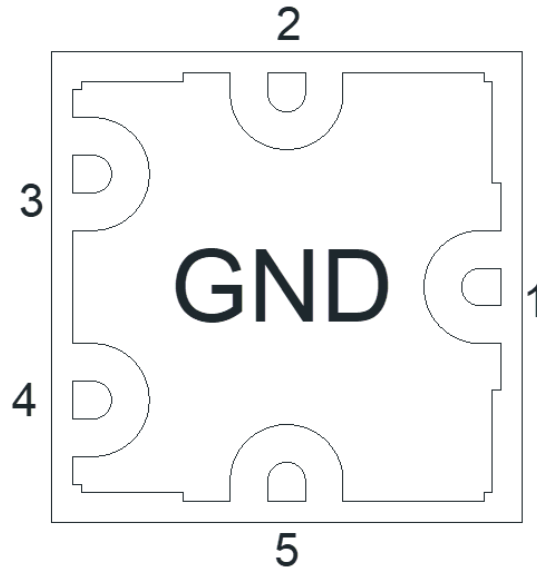
## MPD-1260FCSP2

12 - 60 GHz MMIC 2-Way Wilkinson Power Divider/Power Splitter, Front Ports

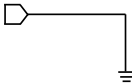
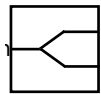
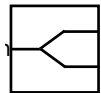
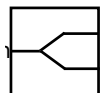
### Port Configuration and Functions

#### Port Diagram

A bottom-up view of the MPD-1260FCSP2 package outline drawing is shown below. The MMIC Power dividers are passive reciprocal devices allowing either power splitting or power combining.



#### Port Functions

Port	Function	Description	DC Equivalent Circuit
Ground Paddle	Gnd	Ground paddle should be connected to RF ground	
Pin 1	Common	Pin 1 is the common input/output pin. It is DC short to Pin 3 and Pin 4 and open to ground.	
Pin 3	Input/Output 1	Pin 3 is an input/output pin. It is DC short to the common and Pin 4 and open to ground.	
Pin 4	Input/Output 2	Pin 4 is an input/output pin. It is DC short to the common and Pin 3 and open to ground.	

## Specifications

### Absolute Maximum Ratings

The Absolute Maximum Ratings indicate limits beyond which damage may occur to the device. If these limits are exceeded, the device may be inoperable or have a reduced lifetime.

Parameter	Maximum Rating	Unit
DC Current	40	mA
Maximum Operating Temperature	100	°C
Maximum Storage Temperature	125	°C
Minimum Operating Temperature	-55	°C
Minimum Storage Temperature	-65	°C
RF Power Handling as a Power Divider	10	W

### Package Information

Parameter	Details	Rating
Dimensions	-	2.50 x 2.50 mm
Moisture Sensitivity Level	-	MSL 1

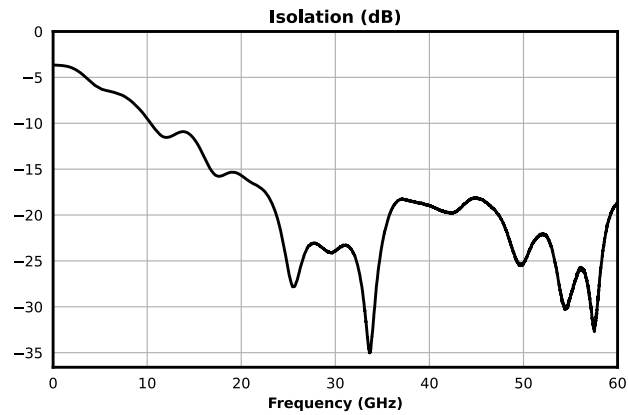
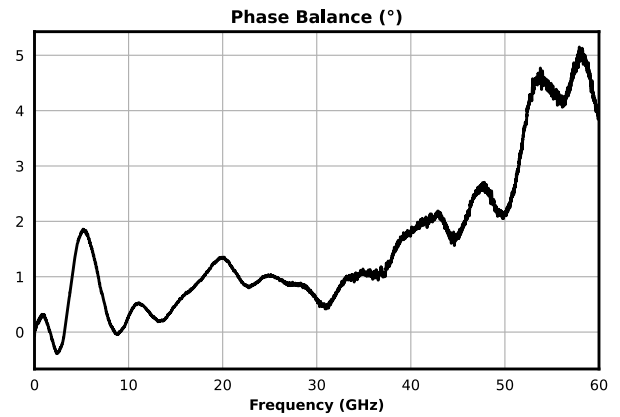
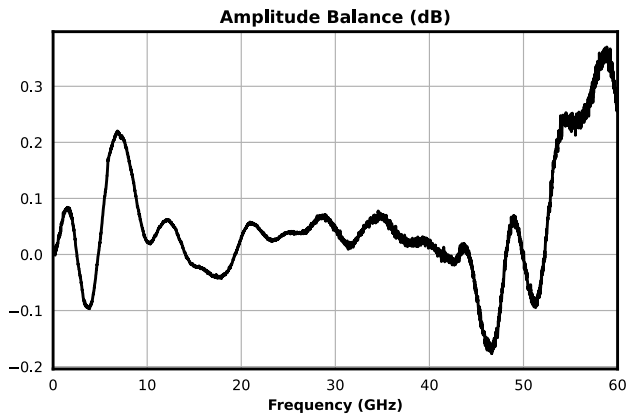
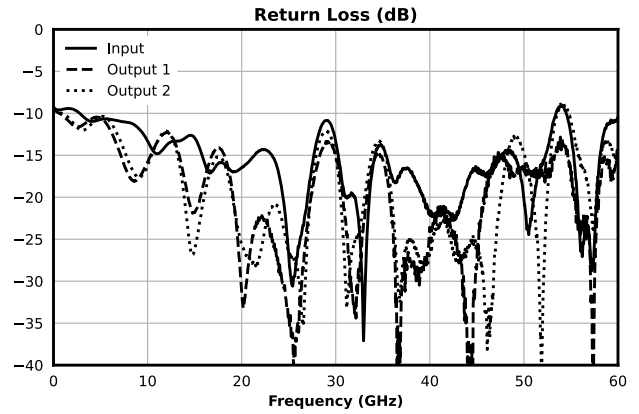
### Electrical Specifications

The electrical specifications apply at TA=+25°C in a 50Ω system. Min and Max limits are guaranteed at TA=+25°C.

Parameter	Test Conditions	Minimum Frequency (GHz)	Maximum Frequency (GHz)	Min	Typ	Max	Unit
Amplitude Balance	-	50	60	-	0.2	-	dB
Isolation	-	18	60	-	22	-	dB
Phase Balance	-	50	60	-	4.3	-	°
Amplitude Balance	-	12	50	-	0.04	-	dB
Common Return Loss	-	12	60	-	17	-	dB
Excess Insertion Loss <sup>1</sup>	-	12	60	-	0.3	-	dB
Impedance	-	-	-	-	50	-	Ω
Isolation	-	12	18	-	12	-	dB
Nominal Phase Shift	-	12	60	-	0	-	°
Nominal Power Splitting (dB)	-	12	60	-	3	-	dB
Output Return Loss	-	12	60	-	22	-	dB
Phase Balance	-	12	50	-	1	-	°

<sup>[1]</sup> Excess Insertion Loss is loss in addition to power splitting loss, calculated as (Common Port to Output Port Insertion Loss) – (Power splitting loss of 3 dB)

### Typical Performance Plots



Measured data is de-embedded from fixture using automatic fixture removal (AFR).

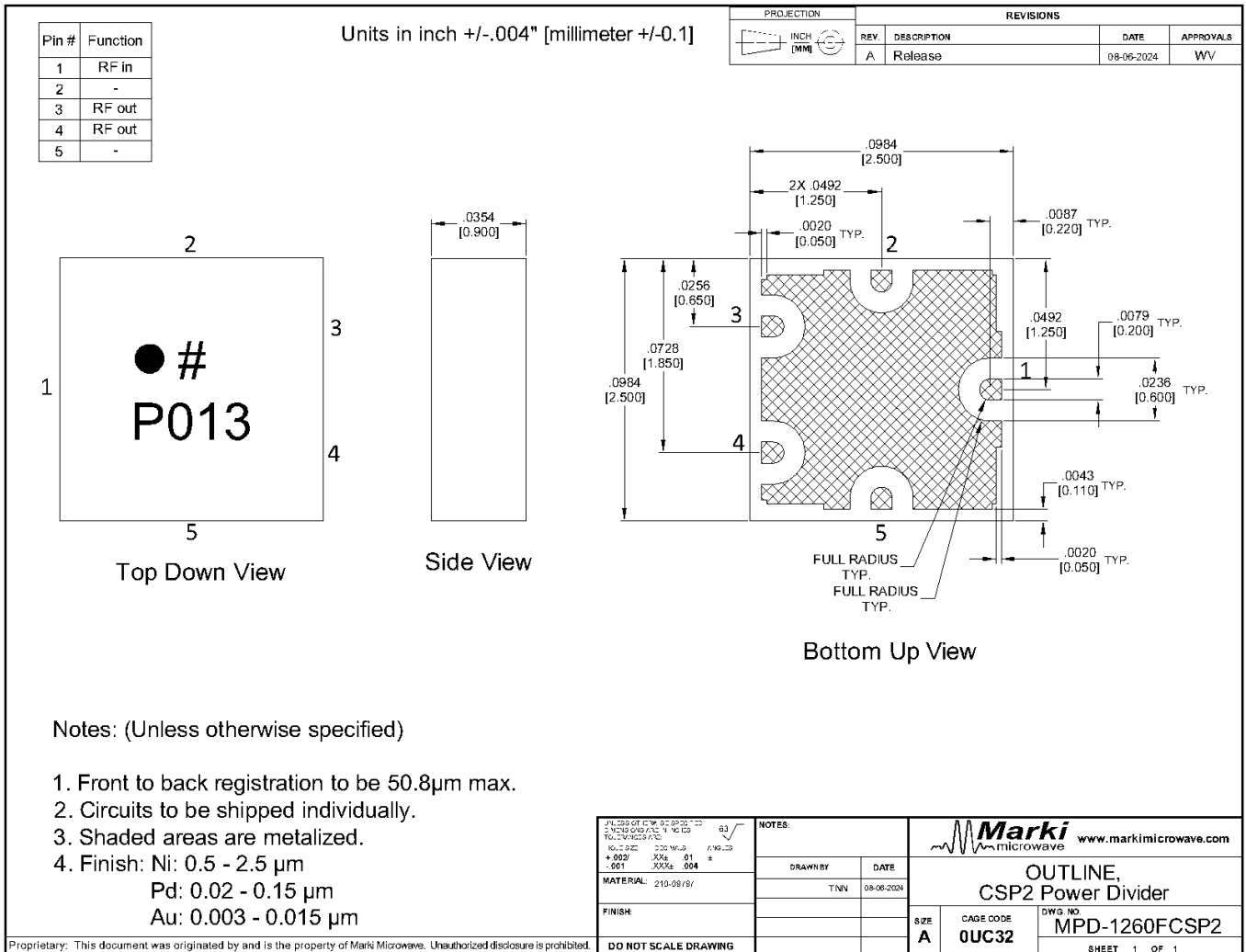
# MPD-1260FCSP2

## 12 - 60 GHz MMIC 2-Way Wilkinson Power Divider/Power Splitter, Front Ports

### Mechanical Data

### Outline Drawing

Download : [Outline 2D Drawing](#) | [Outline 3D Drawing](#) | [Outline 3D STP](#)

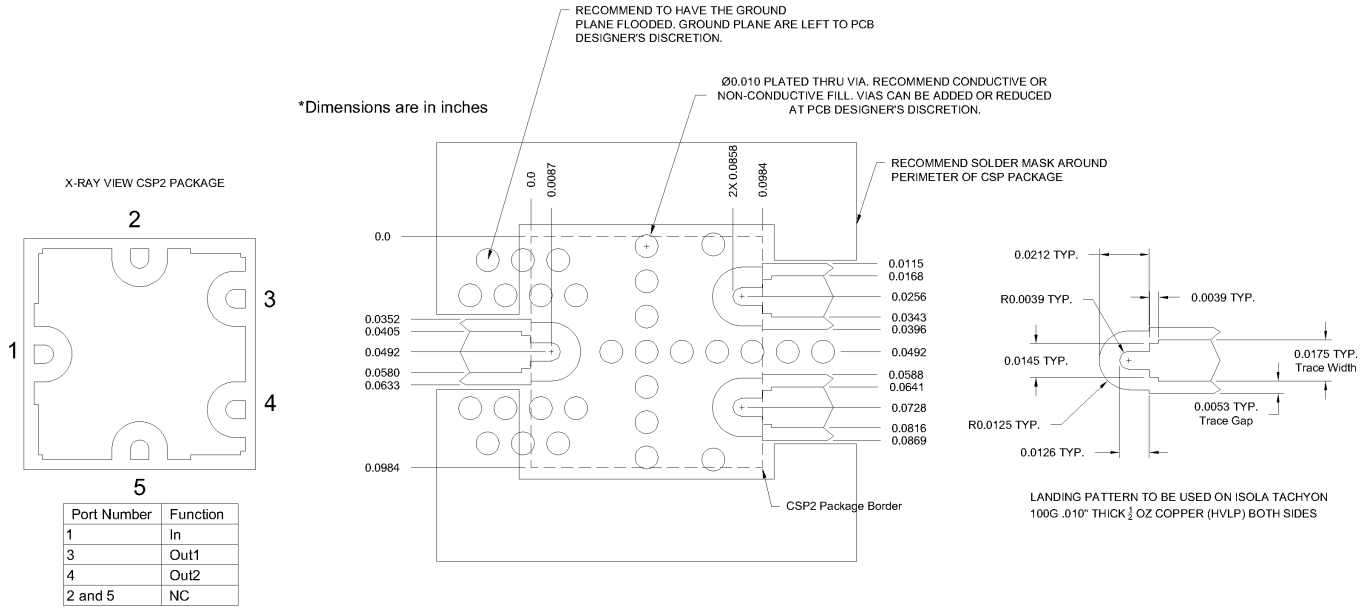


## MPD-1260FCSP2

12 - 60 GHz MMIC 2-Way Wilkinson Power  
Divider/Power Splitter, Front Ports

### Footprint Image

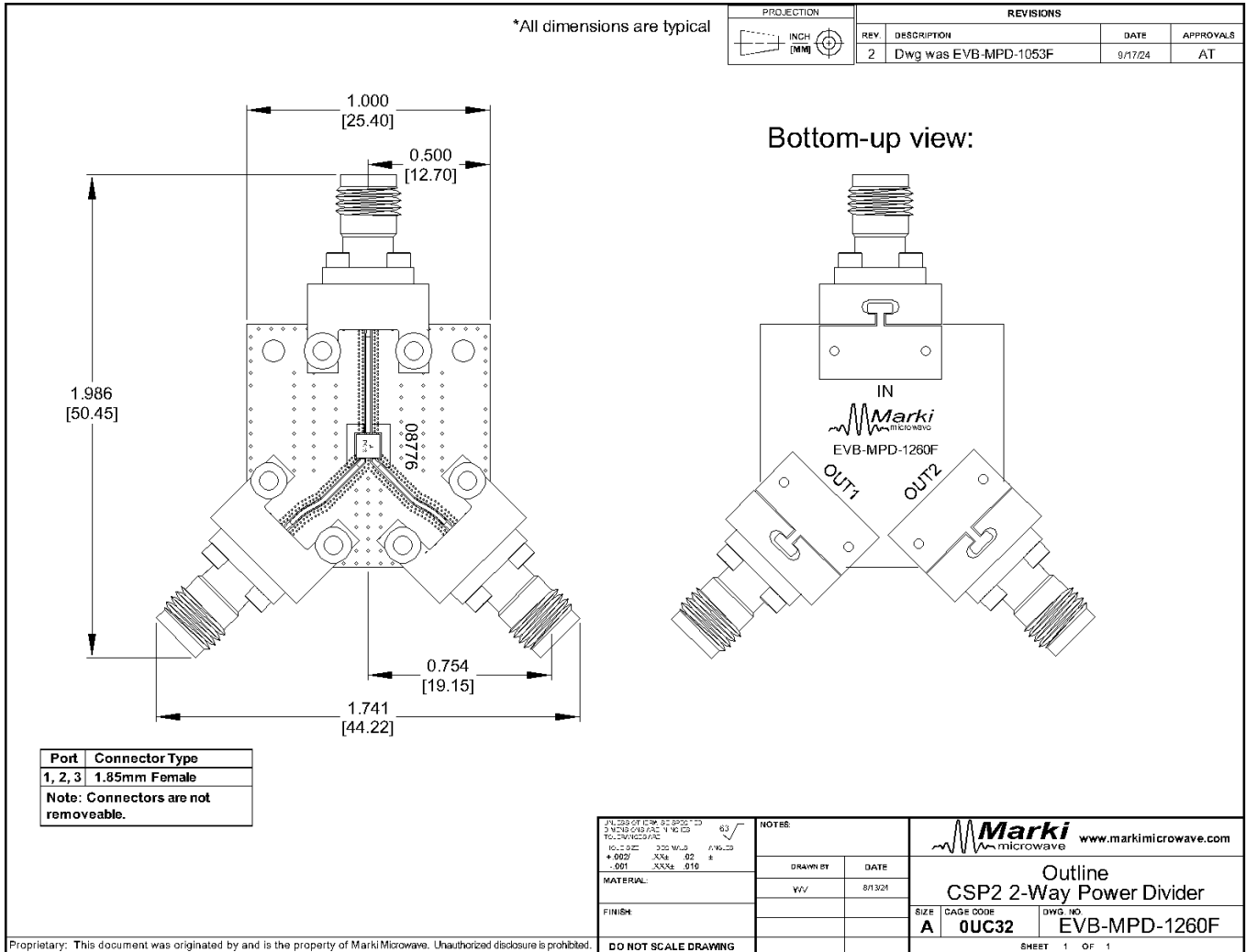
Download : [Footprint Drawing](#)



# MPD-1260FCSP2

12 - 60 GHz MMIC 2-Way Wilkinson Power Divider/Power Splitter, Front Ports

## Evaluation Board - Outline Drawing



## MPD-1260FCSP2

### 12 - 60 GHz MMIC 2-Way Wilkinson Power Divider/Power Splitter, Front Ports

#### DISCLAIMER

MARKI MICROWAVE, LLC., ("MARKI") PROVIDES TECHNICAL SPECIFICATIONS AND DATA (INCLUDING DATASHEETS), APPLICATION OR OTHER DESIGN ADVICE, WEB TOOLS, AND OTHER INFORMATION AND RESOURCES "AS IS" AND WITH ALL FAULTS. MARKI DISCLAIMS ALL WARRANTIES, EXPRESS OR IMPLIED, INCLUDING, WITHOUT LIMITATION, ANY IMPLIED WARRANTIES OF MERCHANTABILITY, FITNESS FOR A PARTICULAR PURPOSE, OR NON-INFRINGEMENT.

These resources are intended for developers skilled in the art designing with Marki products. You are solely responsible for (1) selecting the appropriate products for your application, (2) designing, validating, and testing your application, and (3) ensuring your application meets applicable standards and other requirements. Marki makes no guarantee regarding the suitability of its products for any particular purpose, nor does Marki assume any liability whatsoever arising out of your use or application of any Marki product.

Marki grants you permission to use these resources only for development of an application that uses Marki products. Other reproduction or use of these resources is strictly prohibited. No license is granted to any other Marki intellectual property or to any third-party intellectual property. Marki reserves the right to make changes to the product(s) or information contained herein without notice.

MARKI MICROWAVE and T3 MIXER are trademarks or registered trademarks of Marki Microwave, LLC. All other trademarks used are the property of their respective owners.

© 2024 - 2025, Marki Microwave, LLC