

## EVB-AMM-7199ASM

### Evaluation Board, 11-38 GHz GaAs Surface Mount LO Driver Amplifier

## DEVICE OVERVIEW

### General Description

The EVB-AMM-7199ASM is a connectorized evaluation board for the AMM-7199ASM surface mount 11-38 GHz LO driver amplifier.



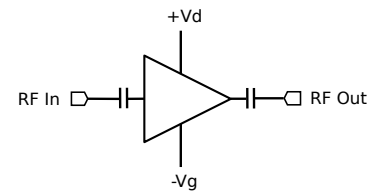
### Features

N/A

### Applications

N/A

### Functional Block Diagram



### Part Ordering Options

| Part Number                 | Description  | Package | Green Status  | Product Lifecycle | Export Classification |
|-----------------------------|--|---------|---------------|-------------------|-----------------------|
| <a href="#">AMM-7199ASM</a> | 11-38 GHz GaAs Surface Mount LO Driver Amplifier                   | QFN     | REACH<br>RoHS | Released          | 3A001.b.2.d           |
| EVB-AMM-7199ASM             | Evaluation Board, 11-38 GHz GaAs Surface Mount LO Driver Amplifier | EVB     | REACH<br>RoHS | Released          | EAR99                 |



www.markimicrowave.com

## **EVB-AMM-7199ASM**

**Evaluation Board, 11-38 GHz GaAs Surface Mount  
LO Driver Amplifier**

### **Table Of Contents**

- **Device Overview**
  - General Description
  - Features
  - Applications
  - Functional Block Diagram
- **Revision History**
- **Specifications**
- **Operation**
  - Application Information
- **Mechanical Data**
  - Outline Drawing
- **Evaluation Board**
  - Evaluation Board Outline Drawing

### **Revision History**

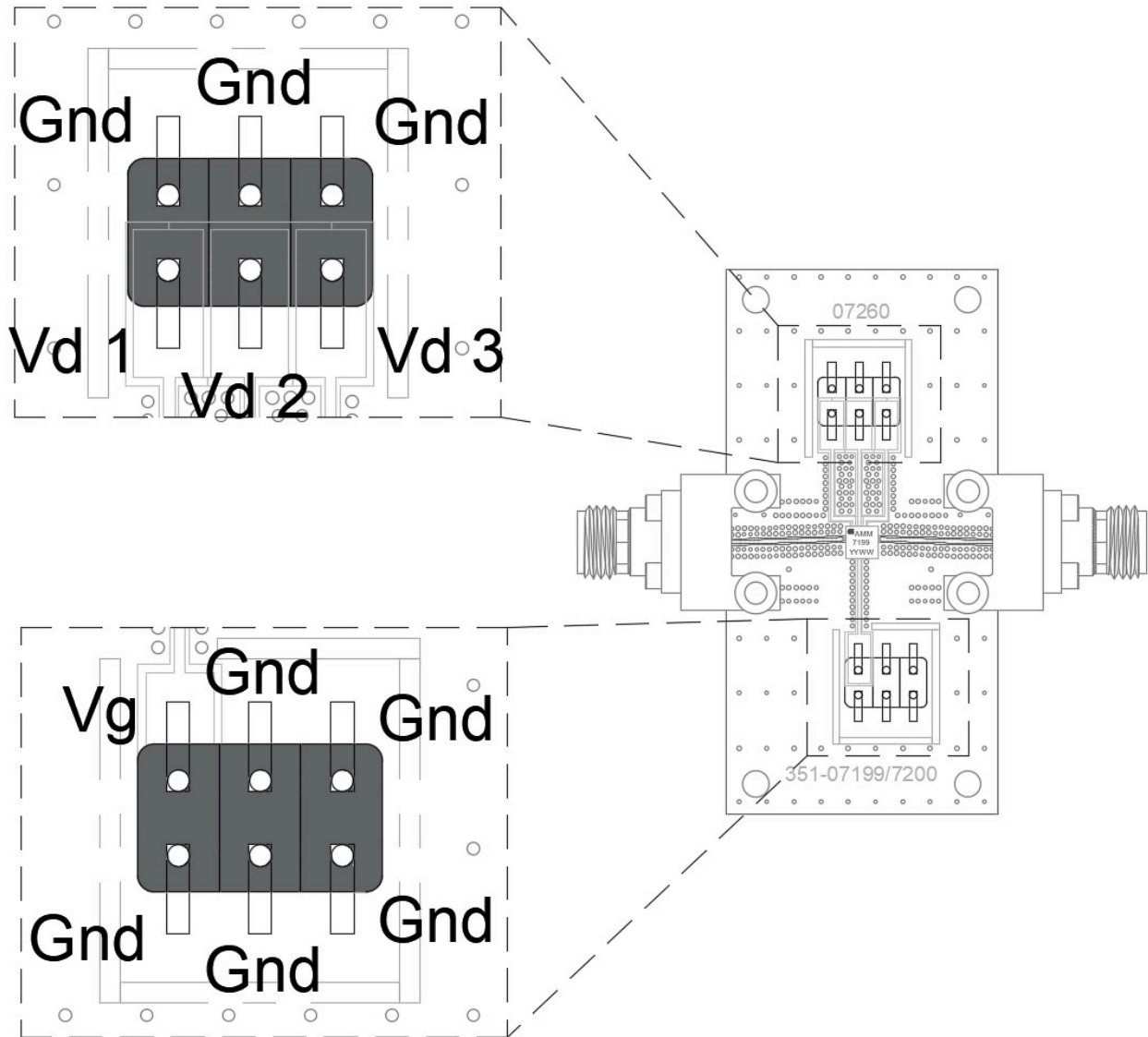
| <b>Revision Code</b> | <b>Revision Date</b> | <b>Comment</b>  |
|----------------------|----------------------|-----------------|
| -                    | 2025-12-18           | Initial Release |

## EVB-AMM-7199ASM

Evaluation Board, 11-38 GHz GaAs Surface Mount LO Driver Amplifier

### Application Information

On the EVB-AMM-7199ASM, there are two headers for biasing the drains and gates of the transistors. The pinout of the headers is given with their location on the evaluation board below:



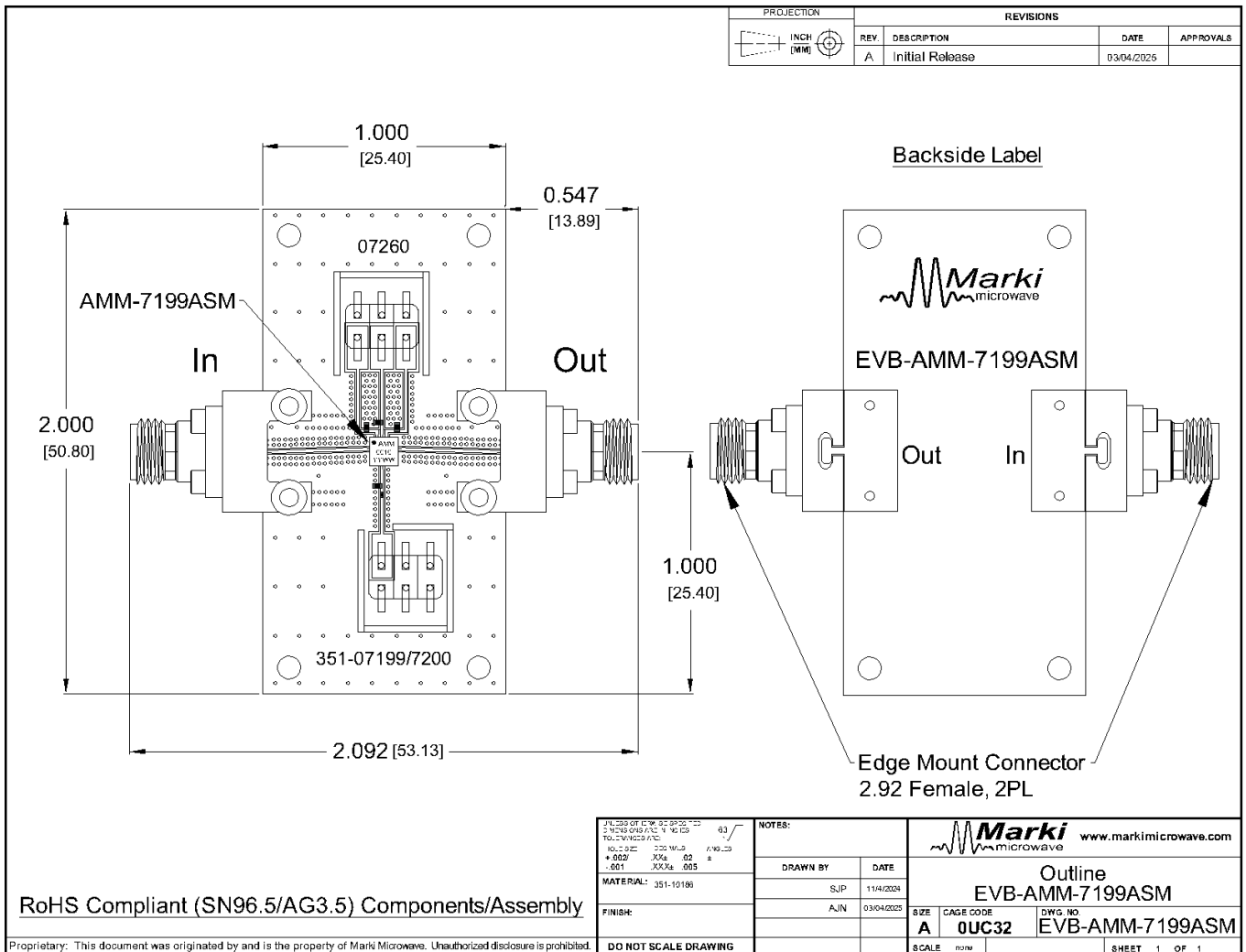
# EVB-AMM-7199ASM

Evaluation Board, 11-38 GHz GaAs Surface Mount LO Driver Amplifier

## Mechanical Data

## Outline Drawing

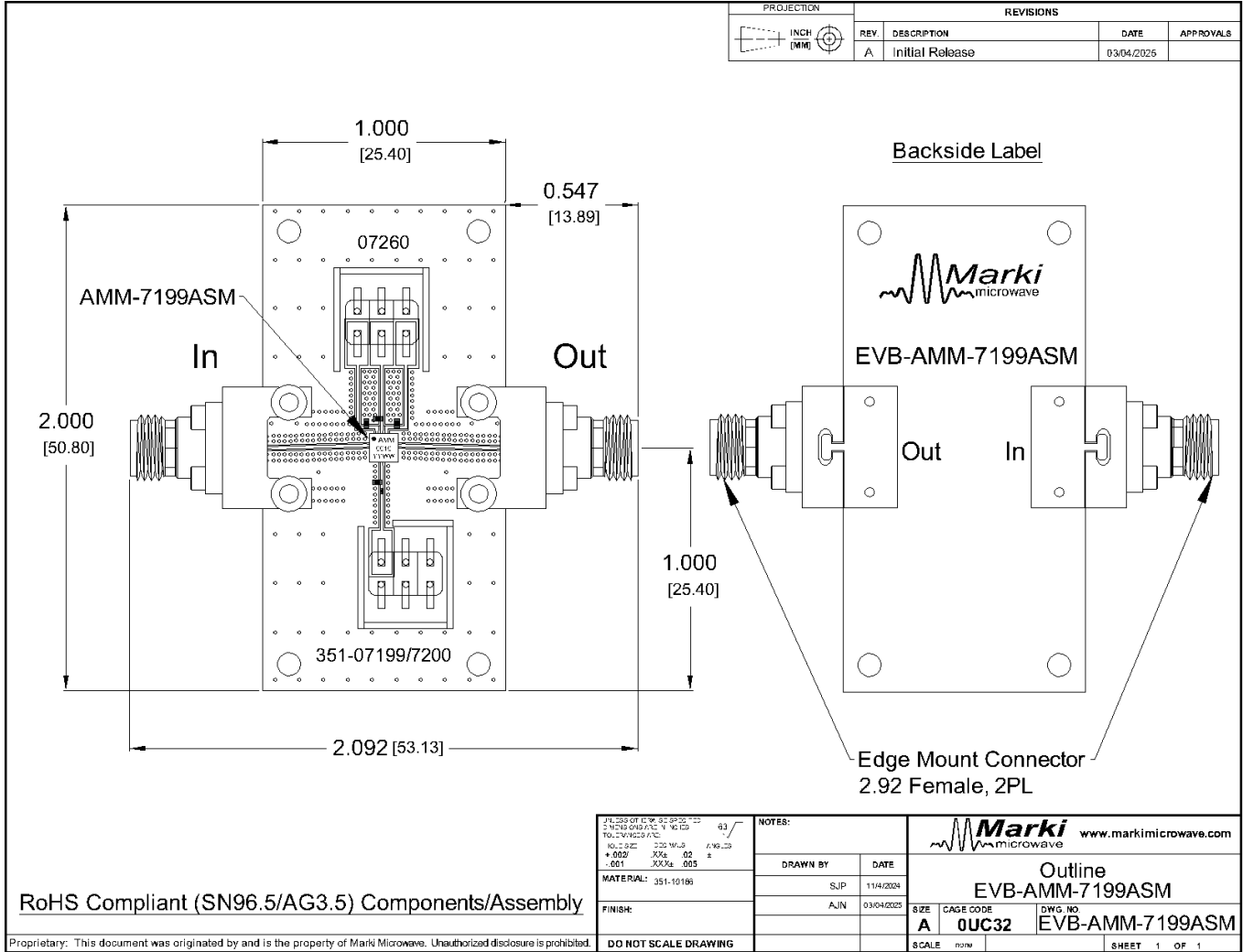
Download : [Outline 2D Drawing](#)



# EVB-AMM-7199ASM

Evaluation Board, 11-38 GHz GaAs Surface Mount LO Driver Amplifier

## Evaluation Board - Outline Drawing



#### **DISCLAIMER**

MARKI MICROWAVE, LLC., ("MARKI") PROVIDES TECHNICAL SPECIFICATIONS AND DATA (INCLUDING DATASHEETS), APPLICATION OR OTHER DESIGN ADVICE, WEB TOOLS, AND OTHER INFORMATION AND RESOURCES "AS IS" AND WITH ALL FAULTS. MARKI DISCLAIMS ALL WARRANTIES, EXPRESS OR IMPLIED, INCLUDING, WITHOUT LIMITATION, ANY IMPLIED WARRANTIES OF MERCHANTABILITY, FITNESS FOR A PARTICULAR PURPOSE, OR NON-INFRINGEMENT.

These resources are intended for developers skilled in the art designing with Marki products. You are solely responsible for (1) selecting the appropriate products for your application, (2) designing, validating, and testing your application, and (3) ensuring your application meets applicable standards and other requirements. Marki makes no guarantee regarding the suitability of its products for any particular purpose, nor does Marki assume any liability whatsoever arising out of your use or application of any Marki product.

Marki grants you permission to use these resources only for development of an application that uses Marki products. Other reproduction or use of these resources is strictly prohibited. No license is granted to any other Marki intellectual property or to any third-party intellectual property. Marki reserves the right to make changes to the product(s) or information contained herein without notice.

MARKI MICROWAVE and T3 MIXER are trademarks or registered trademarks of Marki Microwave, LLC. All other trademarks used are the property of their respective owners.

© 2025, Marki Microwave, LLC