

BTM-0026PSM-1

Miniature Surface Mount 0.01 - 26 GHz Bias-Tee

DEVICE OVERVIEW

General Description

The BTM-0026PSM-1 is a packaged miniature bias tee featuring excellent 0.4 dB insertion loss and superior 25 dB isolations over a broad 10 MHz to 26 GHz bandwidth. The BTM-0026PSM-1 works well for K-Band applications. The BTM-0026PSM-1 is available in a compact 2.25 x 3.7 mm surface mount package or as a connectorized evaluation board. Tight fabrication tolerances allow for low unit to unit variation enabling accurate simulations using the provided s3p file taken from measured production units, making it an excellent alternative to uncharacterized, untested bias tees built with off-the-shelf inductors and capacitors.



[Download s-parameters here](#)

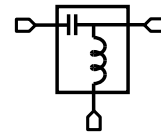
Features

- Low 0.4 dB Insertion Loss
- 16 V Voltage & 0.32 A Current Rating
- 1 W Power Handling
- Miniature Surface Mount Package
- Broad 10MHz to 26GHz Bandwidth

Applications

- Test and Measurement Equipment
- Aerospace and Defense
- SATCOM

Functional Block Diagram



Part Ordering Options

Part Number	Description	Package	Green Status	Product Lifecycle	Export Classification
BTM-0026PSM-1	Miniature Surface Mount 0.01 - 26 GHz Bias-Tee	PSM	RoHS REACH	Released	EAR99
BTM-0026PSM-2	Miniature Surface Mount 0.01 - 26 GHz Bias-Tee	PSM	RoHS REACH	Released	EAR99
EVB-BTM-0026P	Evaluation Board, Miniature Surface Mount 0.01 - 26 GHz Bias-Tee	EVB	RoHS REACH	Released	EAR99

Table Of Contents

- **Device Overview**
 - General Description
 - Features
 - Applications
 - Functional Block Diagram
- **Port Configuration and Functions**
 - Port Diagram
 - Port Functions
- **Revision History**
- **Specifications**
 - Absolute Maximum Ratings
 - Package Information
 - Electrical Specifications
 - Typical Performance Plots
- **Mechanical Data**
 - Outline Drawing
- **Footprint Image**
- **Evaluation Board**
 - Evaluation Board Outline Drawing

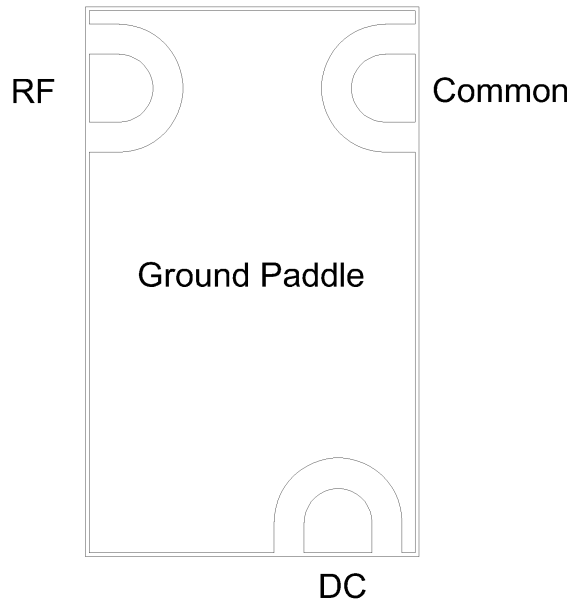
Revision History

Revision Code	Revision Date	Comment
-	2025-09-17	Initial Release

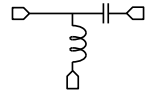
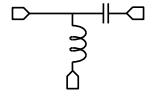
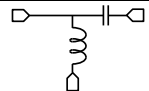
Port Configuration and Functions

Port Diagram

A top-down x-ray view of the BTM-0026PSM-1's PSM package outline drawing is shown below. The BTM-0026PSM-1 has input and output ports given in Port Functions below. To use, apply a DC voltage to the DC pin, and an RF signal to the RF pin.



Port Functions

Port	Function	Description	DC Equivalent Circuit
Common	RF+DC	The Common port is AC coupled to the RF pin and DC coupled to the DC pin.	
DC	DC	The DC port is DC blocked to the RF pin and DC coupled to the common port.	
RF	RF	The RF pin is AC coupled to the common pin and DC blocked to the DC pin.	

Specifications

Absolute Maximum Ratings

The Absolute Maximum Ratings indicate limits beyond which damage may occur to the device. If these limits are exceeded or met simultaneously, the device may be inoperable or have a reduced lifetime.

Parameter	Maximum Rating	Unit
DC Current	0.32	A
DC Voltage	16	V
Maximum Operating Temperature	100	°C
Maximum Storage Temperature	125	°C
Minimum Operating Temperature	-55	°C
Minimum Storage Temperature	-65	°C
Power Handling	30	dBm

Package Information

Parameter	Details	Rating
ESD	250 to < 500 Volts	HBM Class 1A
Weight	Package name: PSM	0.69g
Dimensions	-	2.25 x 3.70 mm
Moisture Sensitivity Level	-	MSL 1

Electrical Specifications

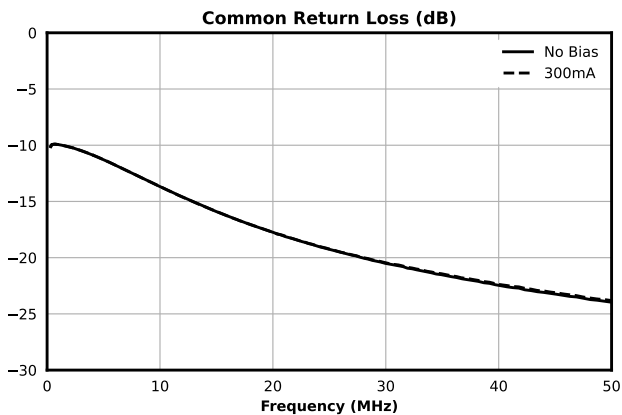
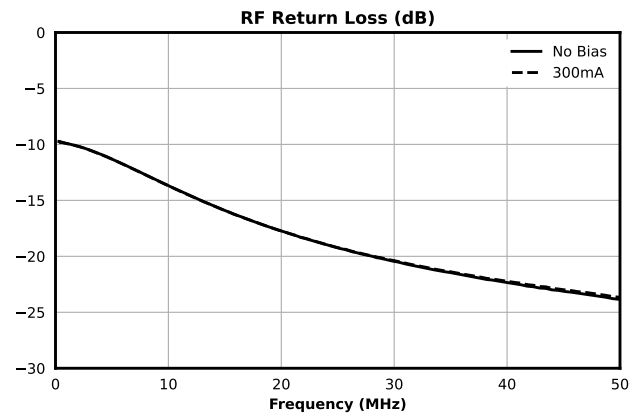
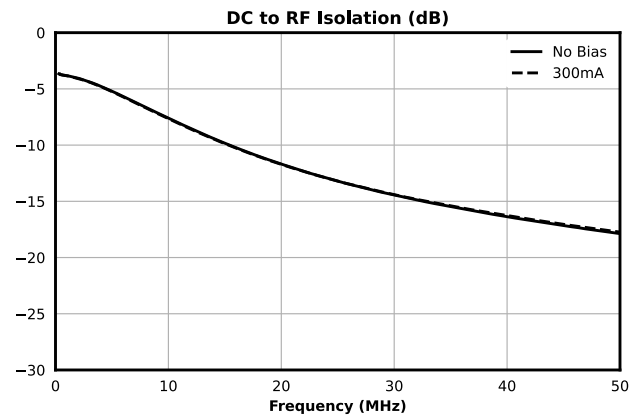
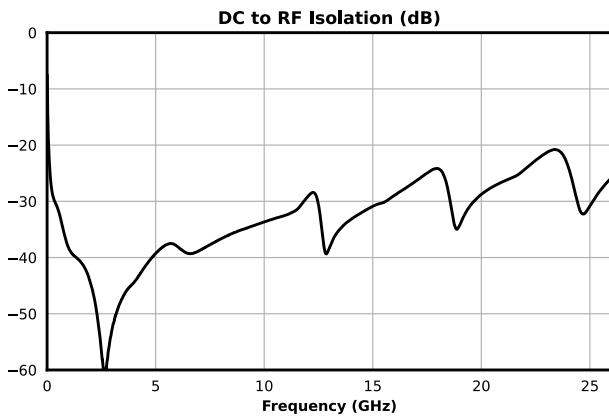
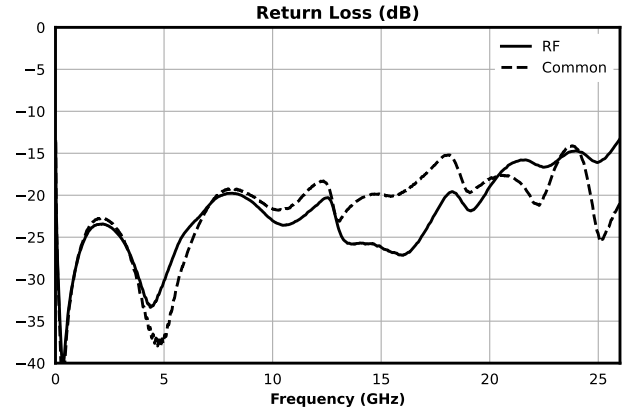
Specifications guaranteed at +25C, measured in a 50-Ohm system

Parameter	Test Conditions	Minimum Frequency (GHz)	Maximum Frequency (GHz)	Min	Typ	Max	Unit
Capacitance	Configuration A, 25°C	0.01	26	-	0.1	-	μF
DC Port Isolation	Configuration A, 25°C	0.01	26	-	25	-	dB
DC Resistance	Configuration A, 25°C	0.01	26	-	1.5	-	Ω
Impedance	Configuration A, 25°C	0.01	26	-	50	-	Ω
Inductance	Configuration A, 25°C	0.01	26	-	1.1	-	μH
Insertion Loss	Configuration A, 25°C	0.01	26	-	0.43	2.5	dB
Return Loss	Configuration A, 25°C	0.01	26	-	20	-	dB

BTM-0026PSM-1

Miniature Surface Mount 0.01 - 26 GHz Bias-Tee

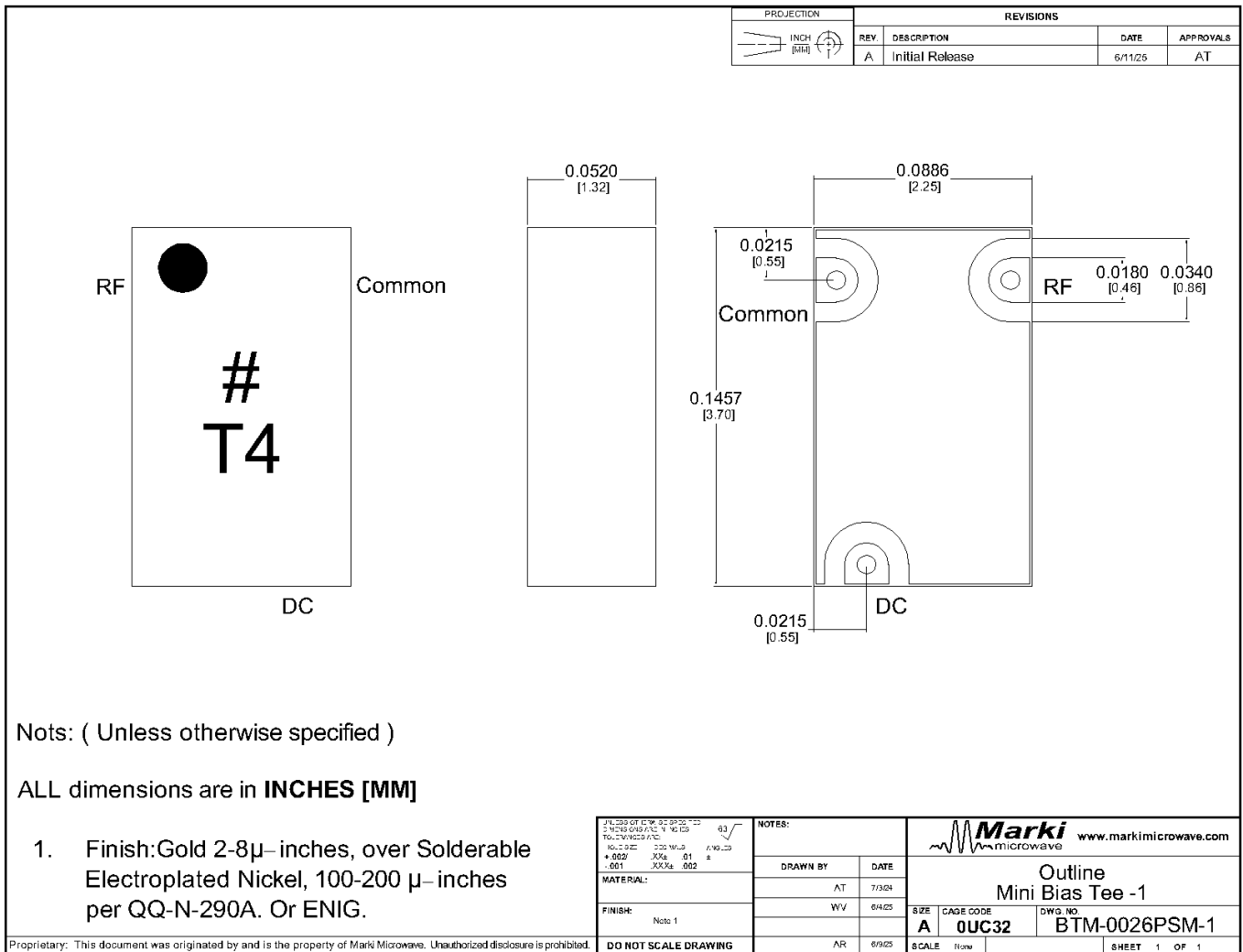
Typical Performance Plots



Mechanical Data

Outline Drawing

Download : [Outline 2D Drawing](#)



BTM-0026PSM-1

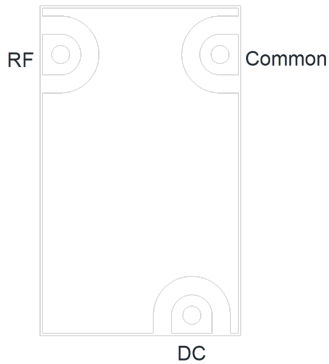
Miniature Surface Mount 0.01 - 26 GHz Bias-Tee

Footprint Image

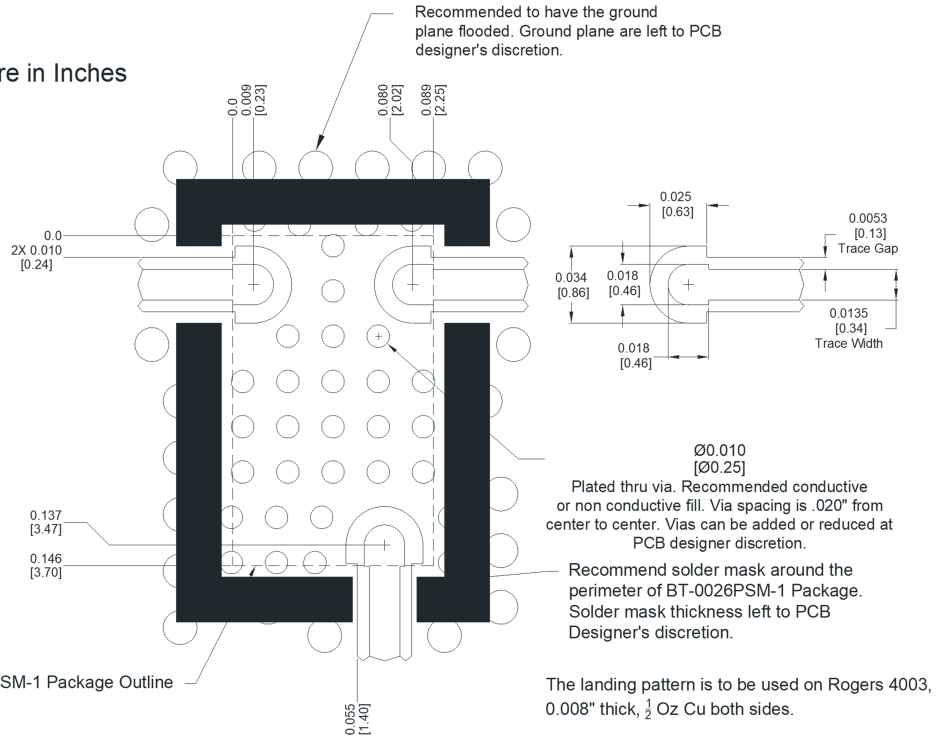
Download : [Footprint Drawing](#)

*Primary Dimensions are in Inches

BTM-0026PSM-1 Package X-Ray View

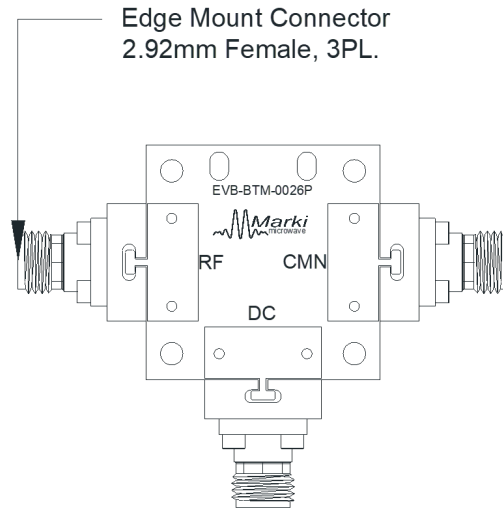
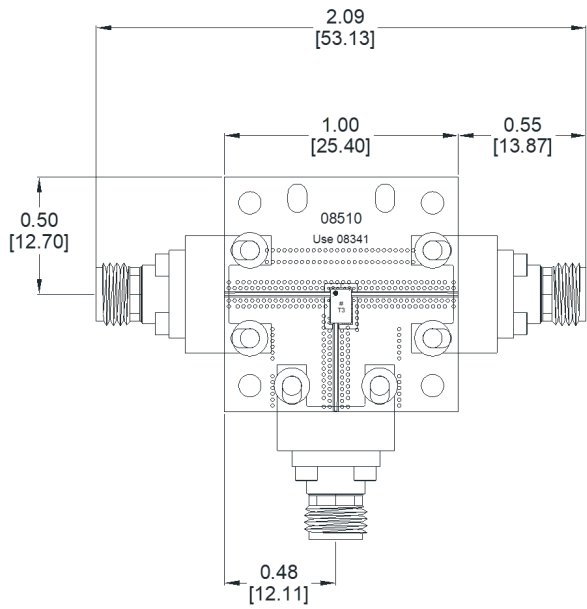
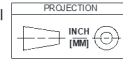


BTM-0026PSM-1 Package Outline



Evaluation Board - Outline Drawing

All measurements are typical



DISCLAIMER

MARKI MICROWAVE, LLC., ("MARKI") PROVIDES TECHNICAL SPECIFICATIONS AND DATA (INCLUDING DATASHEETS), APPLICATION OR OTHER DESIGN ADVICE, WEB TOOLS, AND OTHER INFORMATION AND RESOURCES "AS IS" AND WITH ALL FAULTS. MARKI DISCLAIMS ALL WARRANTIES, EXPRESS OR IMPLIED, INCLUDING, WITHOUT LIMITATION, ANY IMPLIED WARRANTIES OF MERCHANTABILITY, FITNESS FOR A PARTICULAR PURPOSE, OR NON-INFRINGEMENT.

These resources are intended for developers skilled in the art designing with Marki products. You are solely responsible for (1) selecting the appropriate products for your application, (2) designing, validating, and testing your application, and (3) ensuring your application meets applicable standards and other requirements. Marki makes no guarantee regarding the suitability of its products for any particular purpose, nor does Marki assume any liability whatsoever arising out of your use or application of any Marki product.

Marki grants you permission to use these resources only for development of an application that uses Marki products. Other reproduction or use of these resources is strictly prohibited. No license is granted to any other Marki intellectual property or to any third-party intellectual property. Marki reserves the right to make changes to the product(s) or information contained herein without notice.

MARKI MICROWAVE and T3 MIXER are trademarks or registered trademarks of Marki Microwave, LLC. All other trademarks used are the property of their respective owners.

© 2025, Marki Microwave, LLC