

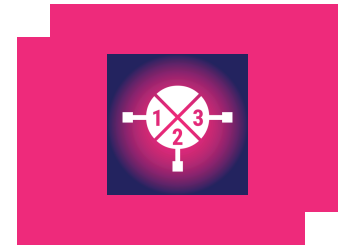
EVB-T3-20GLCTG

Evaluation Board, Two-Tone-Terminator 0.01 - 10 GHz Mixer

DEVICE OVERVIEW

General Description

The EVB-T3-20GLCTG is a connectorized evaluation board for the T3-20G Two-Tone-Terminator surface mount 1.5 - 13 GHz Mixer.



Features

N/A

Applications

N/A

Functional Block Diagram

N/A

Part Ordering Options

Part Number	Description	Package	Green Status	Product Lifecycle	Export Classification
T3-20GLCTG-2	Two-Tone-Terminator Mixer	CTG	REACH RoHS	Released	EAR99
T3-20GLCTG-1	Two-Tone-Terminator Mixer	CTG	REACH RoHS	Released	EAR99
EVB-T3-20GLCTG	Evaluation Board, Two-Tone-Terminator 0.01 - 10 GHz Mixer	EVB	Non-RoHS	Released	EAR99



www.markimicrowave.com

EVB-T3-20GLCTG

Evaluation Board, Two-Tone-Terminator 0.01 - 10 GHz Mixer

Table Of Contents

- **Device Overview**

- General Description
- Features
- Applications

- **Specifications**

- Electrical Specifications

- **Mechanical Data**

- Outline Drawing

- **Evaluation Board**

- Evaluation Board - Performance Data
- Evaluation Board Outline Drawing

EVB-T3-20GLCTG

Evaluation Board, Two-Tone-Terminator 0.01 - 10 GHz Mixer

Electrical Specifications

Parameter	Test Conditions	Min	Typ	Max	Unit
Input IP3	-	-	27	-	dBm
Isolation, LO to RF	-	-	25	-	dB

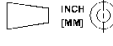
EVB-T3-20GLCTG

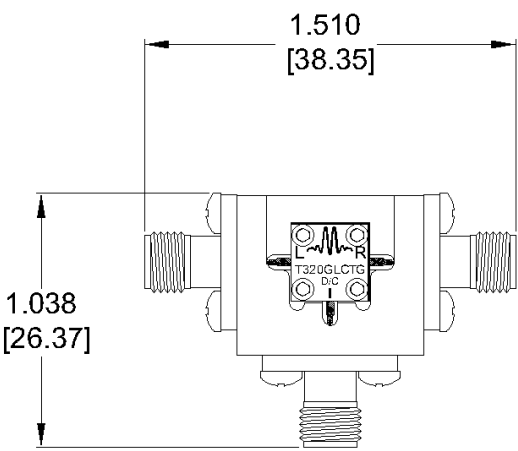
Evaluation Board, Two-Tone-Terminator 0.01 - 10 GHz Mixer

Mechanical Data

Outline Drawing

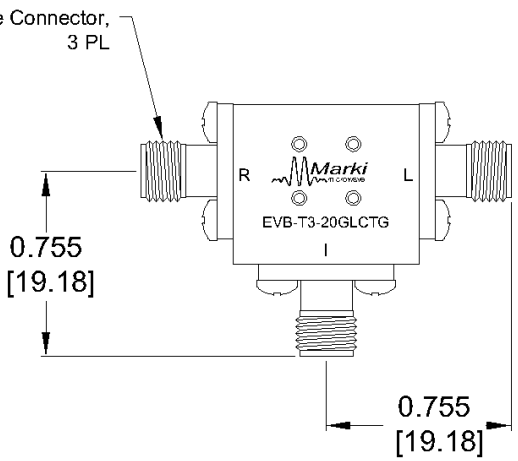
Download : [Outline 2D Drawing](#)

PROJECTION		REVISIONS			
	INCH [MM]	REV.	DESCRIPTION	DATE	APPROVALS
		A	As Drawn	11/13/2023	AJN



1.510
[38.35]

1.038
[26.37]




SMA Female Connector,
3 PL

0.755
[19.18]

0.755
[19.18]

Note: RoHS Compliant Assembly

J1.250 OF (E.W. 92 87 55) 83 2.000 (0.0787) 1.141 (0.045) TOL. 2.000 (0.0787) 1.141 (0.045) 10.000 200 10.000 1.141 (0.045) +.002 .002 .02 ± -.001 .001 .010 ±	NOTES: <table border="1" style="width: 100%; border-collapse: collapse;"> <tr> <th>DRAWN BY</th> <th>DATE</th> </tr> <tr> <td>AJN</td> <td>11/13/2023</td> </tr> <tr> <td>NS</td> <td>12/01/2023</td> </tr> </table>	DRAWN BY	DATE	AJN	11/13/2023	NS	12/01/2023	 <p>www.markimicrowave.com</p> <p>Outline T3 Mixer RF 10 MHz-20 GHz</p> <table border="1" style="width: 100%; border-collapse: collapse;"> <tr> <th>SIZE</th> <th>CAGE CODE</th> <th>DWG. NO.</th> </tr> <tr> <td>A</td> <td>0UC32</td> <td>EVB-T3-20GLCTG</td> </tr> </table> <p style="text-align: right; font-size: 8px;">SHEET 1 OF 1</p>	SIZE	CAGE CODE	DWG. NO.	A	0UC32	EVB-T3-20GLCTG
DRAWN BY	DATE													
AJN	11/13/2023													
NS	12/01/2023													
SIZE	CAGE CODE	DWG. NO.												
A	0UC32	EVB-T3-20GLCTG												
MATERIAL: T3-20GLCTG 481-05117 FINISH:	DO NOT SCALE DRAWING													

Proprietary: This document was originated by and is the property of Marki Microwave. Unauthorized disclosure is prohibited.

EVB-T3-20GLCTG

Evaluation Board, Two-Tone-Terminator 0.01 - 10 GHz Mixer

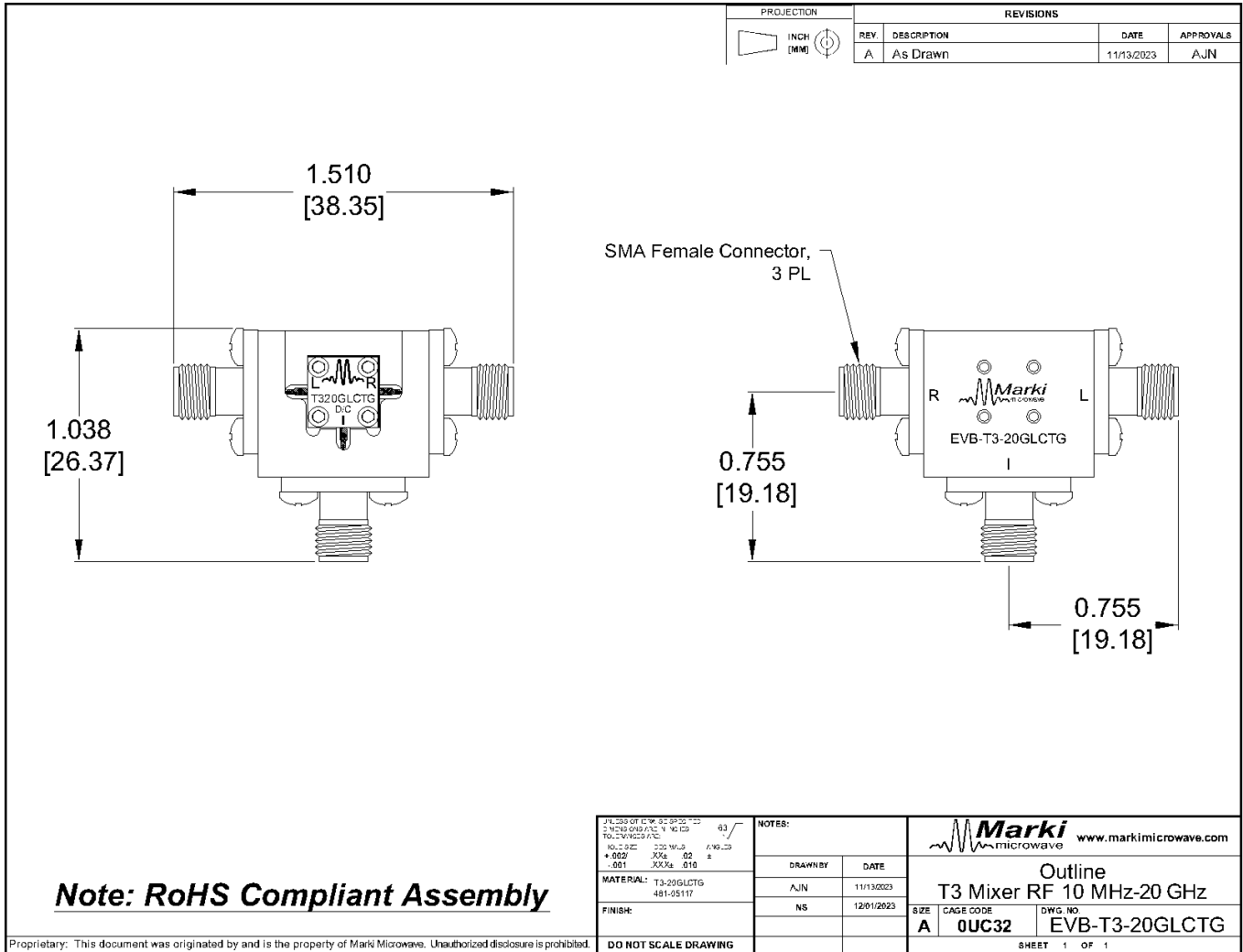
Evaluation Board - Performance Data

Parameter	Test Conditions	Frequency Range (GHz)	Min	Typ	Max	Unit
Input IP3	-	-	-	27	-	dBm
Isolation, LO to RF	-	-	-	25	-	dB

EVB-T3-20GLCTG

Evaluation Board, Two-Tone-Terminator 0.01 - 10 GHz Mixer

Evaluation Board - Outline Drawing



PROJECTION: INCH (MM)

REVISIONS		DATE	APPROVALS
REV. A	DESCRIPTION: As Drawn	11/13/2023	AJN


Dimensions:

- Top width: 1.510 [38.35]
- Left height: 1.038 [26.37]
- Right height: 0.755 [19.18]
- Bottom width: 0.755 [19.18]

SMA Female Connector, 3 PL

Labels on board: L, R, T320GLCTG, D1G, Marki microwave, EVB-T3-20GLCTG, I

Note: RoHS Compliant Assembly

JUN 2023 OF 12/16 02:59:22 11/13/2023 5.14.210 010.171 11.14.103 TOL: 0.001/0.002/0.005		NOTES: 63		 www.markimicrowave.com	
MATERIAL: T3-20GLCTG 481-0511F		FINISH:		Outline T3 Mixer RF 10 MHz-20 GHz	
DRAWN BY: AJN DATE: 11/13/2023		DATE: 12/01/2023		SIZE: A CAGE CODE: 0UC32 DWG. NO: EVB-T3-20GLCTG	
DO NOT SCALE DRAWING		SHEET 1 OF 1		PROPRIETARY: This document was originated by and is the property of Marki Microwave. Unauthorized disclosure is prohibited.	

DISCLAIMER

MARKI MICROWAVE, INC., ("MARKI") PROVIDES TECHNICAL SPECIFICATIONS AND DATA (INCLUDING DATASHEETS), APPLICATION OR OTHER DESIGN ADVICE, WEB TOOLS, AND OTHER INFORMATION AND RESOURCES "AS IS" AND WITH ALL FAULTS. MARKI DISCLAIMS ALL WARRANTIES, EXPRESS OR IMPLIED, INCLUDING, WITHOUT LIMITATION, ANY IMPLIED WARRANTIES OF MERCHANTABILITY, FITNESS FOR A PARTICULAR PURPOSE, OR NON-INFRINGEMENT. These resources are intended for developers skilled in the art designing with Marki products. You are solely responsible for (1) selecting the appropriate products for your application, (2) designing, validating, and testing your application, and (3) ensuring your application meets applicable standards and other requirements. Marki makes no guarantee regarding the suitability of its products for any particular purpose, nor does Marki assume any liability whatsoever arising out of your use or application of any Marki product.

Marki grants you permission to use these resources only for development of an application that uses Marki products. Other reproduction or use of these resources is strictly prohibited. No license is granted to any other Marki intellectual property or to any third-party intellectual property. Marki reserves the right to make changes to the product(s) or information contained herein without notice.

MARKI MICROWAVE and T3 MIXER are trademarks or registered trademarks of Marki Microwave, Inc. All other trademarks used are the property of their respective owners.

© 2022 - 2025, Marki Microwave, Inc